



## ENDODONTIC

Endodontic Set-ups	F
Endodontic Microsurgery	F2
Explorers	F17
Excavators	F18
Endodontic Accessories	F19
Spreaders	F20
Pluggers	F23
Rubber Dam Clamps	F27
Rubber Dam Clamp Accessories & Kits	F31



### COPYRIGHT AND TRADEMARK INFORMATION

Note: some of the devices, products, and/or programs advertised may not be licensed for sale outside the United States. Contact your local sales or customer care representative for availability details.

For full product warranty details, please visit [Hu-Friedy.com/Services/Warranties](https://www.hu-friedy.com/Services/Warranties). The contents of this catalog including, but not limited to, all text, photographs and graphics, are the sole and exclusive property of Hu-Friedy Mfg. Co., LLC and may not be copied, reproduced or distributed without prior written permission.

©2019 Hu-Friedy Mfg. Co., LLC. All Rights Reserved.



# ENDODONTIC SET-UPS

## ENDODONTIC SIGNATURE SERIES SET-UP 1

DESCRIPTION	SUGGESTION
Large Signature Series 12 Instrument Cassette, Gray	IM4121
Satin Steel Mirror Handle	MH6
4 Front Surface Mouth Mirror	MIR4/3
DG16 Endo Explorer, Satin Steel Handle	EXDG166
1 Locking Endo Pliers	EPL1 (2)
31L Excavator, Satin Steel Handle	EXC31L6
D11 Nickel Titanium Endo Spreader	RCSD11NT
1/3 Endo Plugger	RCP1/3
5/7 Endo Plugger	RCP5/7
9/11 Endo Plugger	RCP9/11
1 Glick Blade/Endo Plugger	RCPGL1
Miller Articulating Paper Forceps	APF2
CW Aspirating Anesthetic Syringe	SYRCW
Rubber Dam Forceps	RDF
1 Satin Steel Rubber Dam Clamp	RDCM1
2 Satin Steel Rubber Dam Clamp	RDCM2
9 Satin Steel Rubber Dam Clamp	RDCM9
26N Satin Steel Rubber Dam Clamp	RDCM26N
Endo Stand, Holds 24 Files and Reamers	IMS-1275
Small Parts Box	IMS-1271
Bur Cushion Short Lid, Holds 12	IMS-1372S
A/W Syringe Tip Clip	IM1005

## KIT-RDC2

DESCRIPTION	SUGGESTION
Clamp, Rubber Dam #W2, Satin Steel	RDCMW2
Clamp, Rubber Dam #W3, Satin Steel	RDCMW3
Clamp, Rubber Dam #W7, Satin Steel	RDCMW7
Clamp, Rubber Dam #27, Satin Steel	RDCM27
Rubber Dam Clamp #212, Satin Steel	RDCM212
Rubber Dam Punch-Ainsworth	RDPA
Rubber Dam Forceps	RDF
Rubber Dam Template, FDI	RDTFDI
MTO 12 IN SIG SERIES,CAS,BLUE, ECR,E2,8LP	IM8128CE2L
Rubber Dam Frame, Adult	RDAF6

## ENDODONTIC SET-UP 2

DESCRIPTION	SUGGESTION
Cassette, Green	IM4169
Mirror/Handle	MIR4/3, MH6
Explorer	EXD5
Probe	PCP12
Endodontic Explorer	EXDG16
Endodontic Pliers (2)	EPL1
Excavator	EXC31L
Endodontic Spreader	RCSD11T
Endodontic Pluggers	RCP5/7, RCPGL1
Bur Cushion	IMS-1372S
Small Parts Box	IMS-1271
Rubber Dam Clamps	RDCM1, RDCM2, RDCM9, RDCM26N
Rubber Dam Forceps	RDF
Articulating Paper Forceps	APF2

## OTHER RECOMMENDED INSTRUMENTS:

RUBBER DAM PUNCH: RDP, RDPA

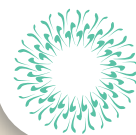
ROOT FORCEPS: RF45

PLASTIC FILLING: PFIWDS2

STAINLESS STEEL RULER: CLR6

## OTHER RECOMMENDED PRODUCTS:

SUCTION TIP, ASPIRATING SYRINGE, A/W SYRINGE TIP,  
HINGED INSTRUMENT CLIP, COLOR-CODED RINGS



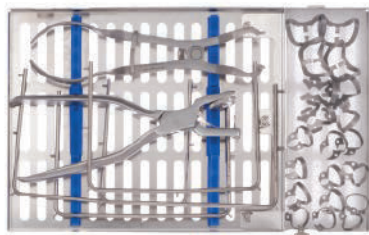
## HU-FRIEDY'S ENDODONTIC INSTRUMENTATION

Hu-Friedy's comprehensive line of endodontic instruments and accessories give you versatile options to meet all of your clinical needs. Many of our instruments, especially those made for microsurgical applications, were developed in conjunction with leading global Key Opinion Leaders who are on the cutting-edge of clinical research, design and application. If you are looking for exceptional instrument design, quality and reliability, and unmatched customer service, choose Hu-Friedy's Endodontic Instruments.



### MICRO MIRRORS

Exceptionally small mirrors with rhodium coating to resist scratches.



### PROCEDURAL KITS

Precreated kits for common procedures to streamline and simplify your setups.



### RUBBER DAM CLAMPS

Matte or Black Line finish on rubber dam clamps helps to absorb and dissipate light instead of reflecting.



### RUBBER DAM CLAMP FORCEPS

A popular rubber dam clamp accessory, Rubber Dam Forceps feature a useful attachment design which makes it easy to pick up and place rubber dam clamps.



### ENDO MICROSURGICAL

Instruments designed specifically for use with microscopes during endodontic microsurgical procedures.



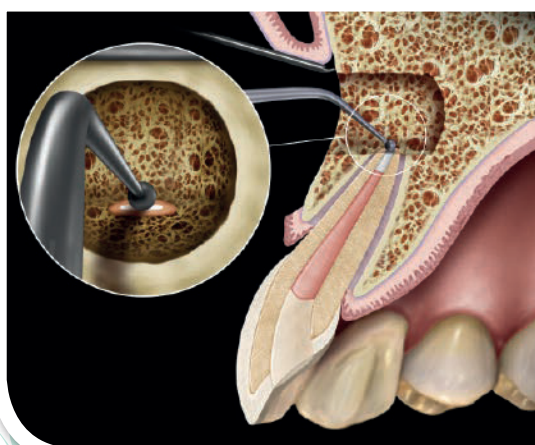
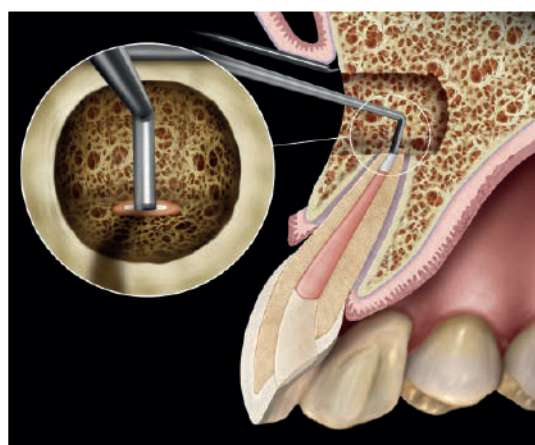
### NICKEL TITANIUM ENDODONTIC SPREADERS

Nickel Titanium Endodontic Spreaders provide extra flexibility and "memory" while the ergonomic, color-coded Satin Steel handles provide maximum comfort, control and easy identification.



## ENDODONTIC MICROSURGERY

Hu-Friedy has an extensive line of apical hand instruments. This includes curettes, explorers, condensers, burnishers and mirrors. Many were developed in conjunction with Hu-Friedy Key Opinion Leader, Professor Marwan Abou-Rass and other leading global innovators.



Mirrors

Curettes/  
Excavators

Explorers

Filling  
Instruments

Condensers/  
Pluggers

Combo Plugger/  
Burnisher



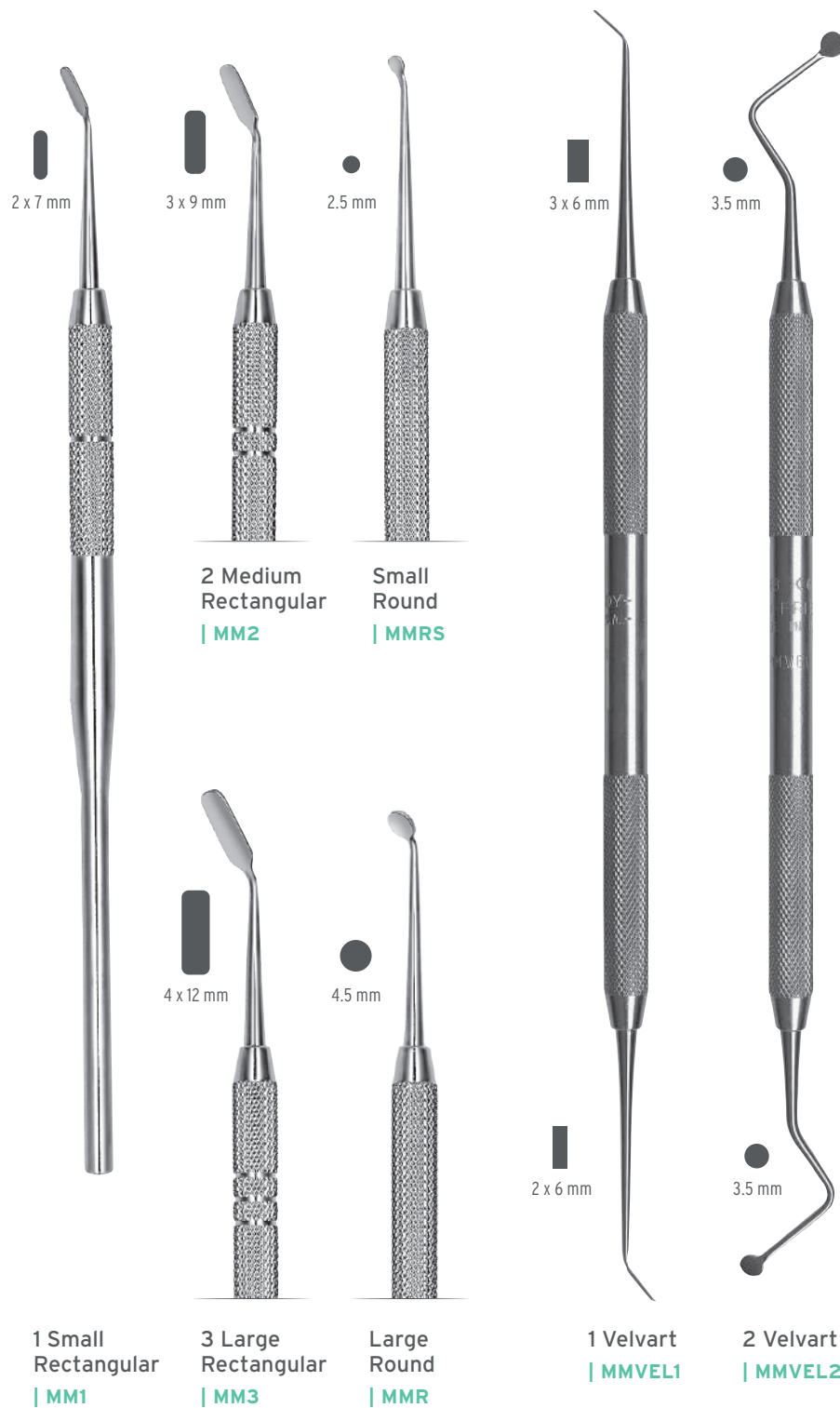


## MICROSURGICAL MIRRORS

Hu-Friedy has a large assortment of microsurgical mirrors to choose from. Select from single instruments or choose the mirror you want and team it up with a handle of your choice. The rhodium-coated front surface mirrors offer sharp, scratch- and distortion-free visibility.

### VELVART

They are made from highly polished stainless steel, come in round or rectangular shapes, are single or double-ended, and are offered in a variety of sizes.



### FRONT SURFACE RHODIUM-COATED



\*Mirror Handle sold separately. Mirror Handle options include: 10-130-70, 10-130-08, SHDPV, SHTMBH. MBW wrench required for assembly.

Handles of the MM1, MM2 and MM3 are marked with one, two or three bands for easy identification.



# MICROSURGICAL DR. MARWAN ABOU-RASS CURETTER/EXCAVATORS

Curettes in straight and angled forms, and useful sizes. Straight curettes provide controlled straight line access and good visibility; use angled forms to access difficult or confined areas.

## STRAIGHT



1 Abou-Rass Apical  
| MAR-SC1



2 Abou-Rass Apical  
| MAR-SC2



3 Abou-Rass Apical  
| MAR-SC3



4 Abou-Rass Apical  
| MAR-SC4

## ANGLED



1 Abou-Rass  
| MAR-C1



2 Abou-Rass  
| MAR-C2



3 Abou-Rass  
| MAR-C3



4 Abou-Rass  
| MAR-C4

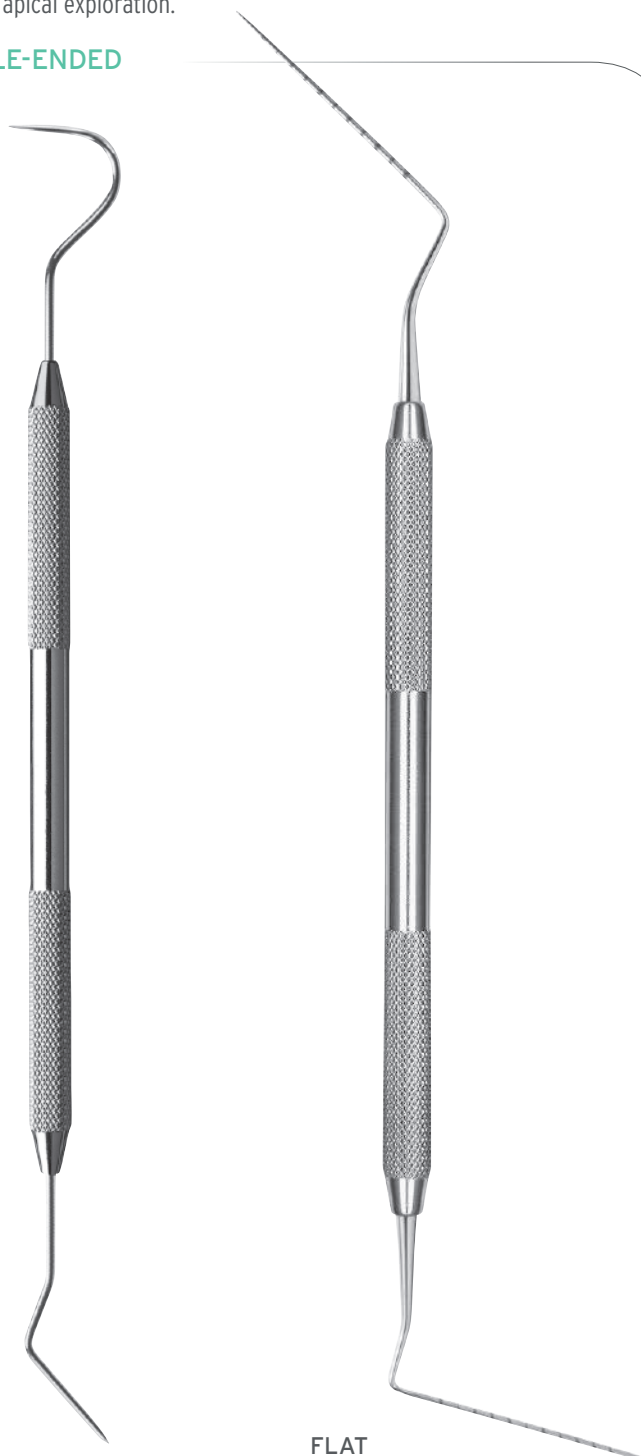
\*The terms "Curettes" and "Excavators" are interchangeable.

Hu-Friedy's large selection of microsurgical explorers are available in various designs and working ends, giving the clinician useful options for exploration and treatment. From the basic and popular MEX1, to Professor Abou-Rass' excellent assortment of explorers, they all provide the balance, fine design and construction that practitioners need for careful yet thorough apical exploration.

## MICROSURGICAL DR. MARWAN ABOU-RASS EXPLORERS



### DOUBLE-ENDED



#### 1 Abou-Rass

##### | MAR-EX1

A versatile explorer with two different, useful and sharp working ends.

#### FLAT

#### 3 Abou-Rass

##### | MAR-EX3

A probe with one blunt flat and one round end; excellent for taking measurements, especially the direct root length of the apex.

### SINGLE-ENDED



#### 2 Abou-Rass

##### | MAR-EX2

A single-ended bone file styled explorer used to enlarge the opening made by MAR-EX1 into the cortical bone to allow drainage.

#### 4 Abou-Rass

##### | MAR-EX4

Its straight, sharp working end is ideal for penetrating small osseous defects in cortical bone.



#### 5 Abou-Rass

##### | MAR-EX5

A 45° angled explorer used to check dentinal defects, such as root caries, root resorption and fracture lines.

#### 6 Abou-Rass

##### | MAR-EX6

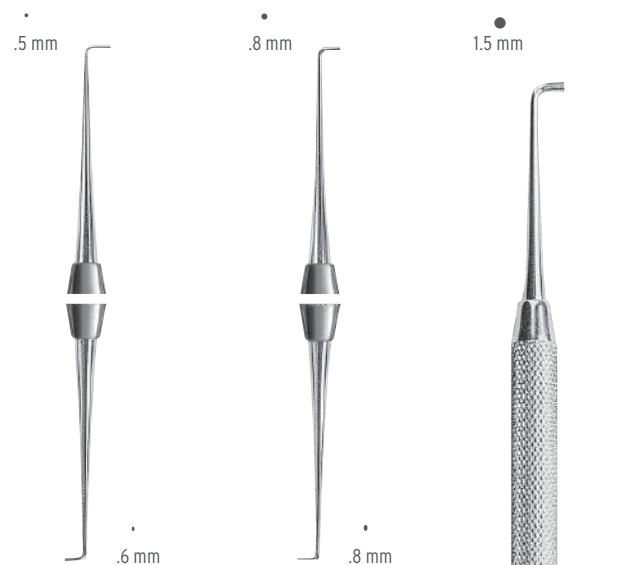
A 90° angled, sharp-pointed explorer useful for detecting apical foramen and apical seal quality.



# MICROSURGICAL DR. MARWAN ABOU-RASS CONDENSERS/PLUGGERS

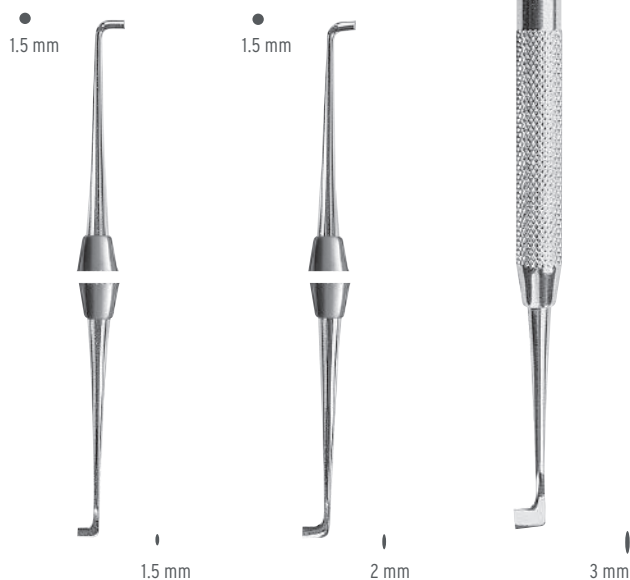
Designed in conjunction with Professor Abou-Rass, these double-ended instruments are perfect for retrofill applications. They are double-ended with one round and one oval tip. Round working tips produce "pot hole" preparations while oval tips make "isthmus" designs.

## STRAIGHT



.5 Abou-Rass  
| MAR-SAC.5

1 Abou-Rass  
| MAR-SAC1

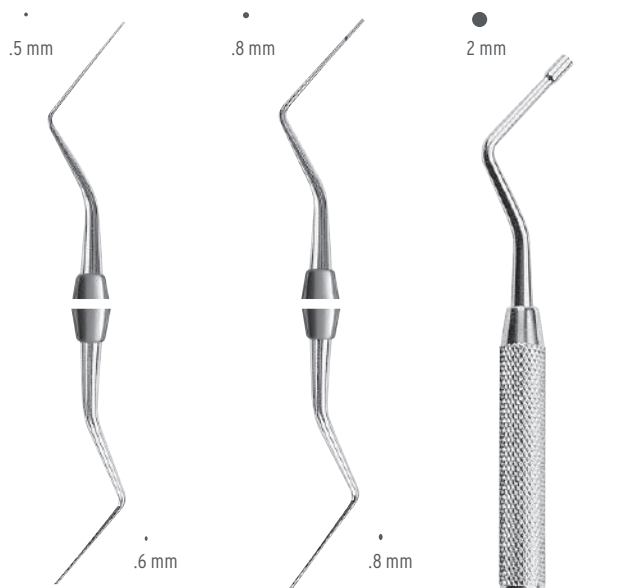


1.5 Abou-Rass  
| MAR-SAC1.5

2 Abou-Rass  
| MAR-SAC2

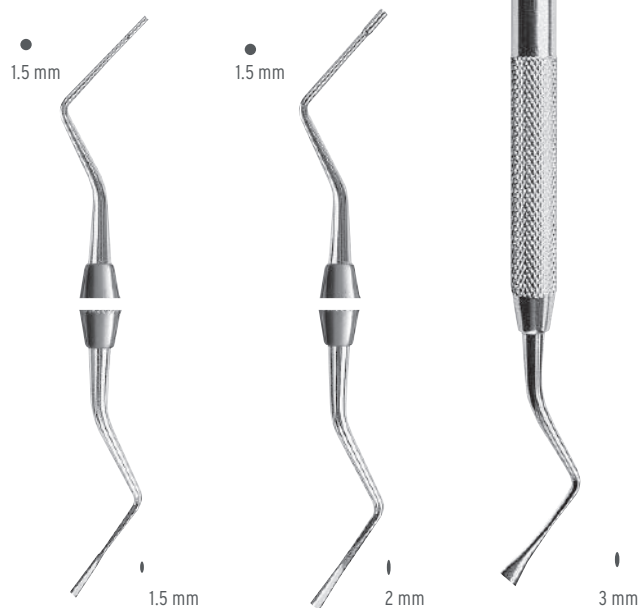
3 Abou-Rass  
| MAR-SAC3

## ANGLED



.5 Abou-Rass  
| MAR-AAC.5

1 Abou-Rass  
| MAR-AAC1



1.5 Abou-Rass  
| MAR-AAC1.5

2 Abou-Rass  
| MAR-AAC2

3 Abou-Rass  
| MAR-AAC3

\*The terms "Condensers" and "Pluggers" are interchangeable.

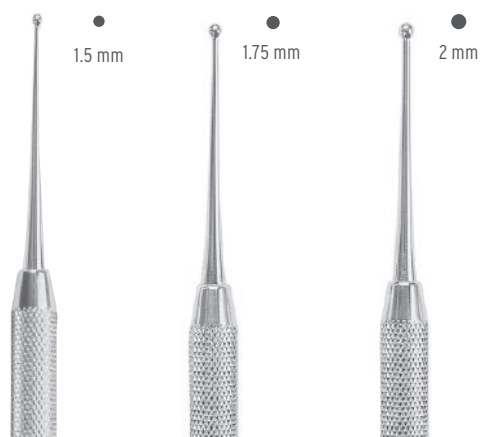


This family of ball burnishers is available in straight and angled forms. Straight designs provide direct, straight access with ease and visibility. The angled forms have long shanks for optimal reach and visibility of the working end.

## MICROSURGICAL DR. MARWAN ABOU-RASS BURNISHERS

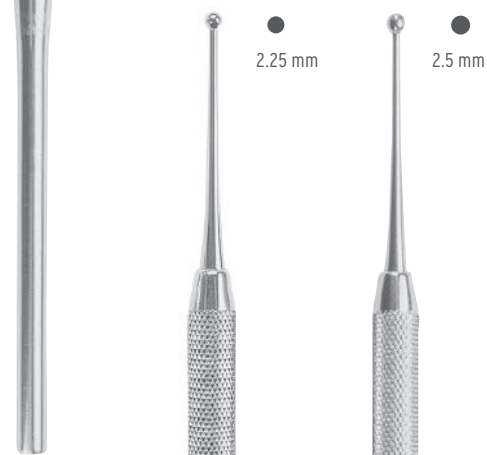


### STRAIGHT



2 Abou-Rass  
| MAR-SB2

3 Abou-Rass  
| MAR-SB3

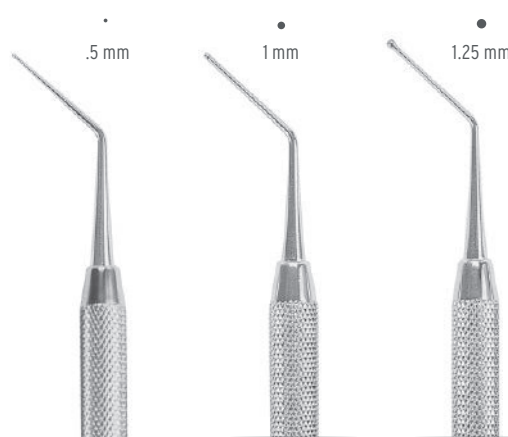


1 Abou-Rass  
| MAR-SB1

4 Abou-Rass  
| MAR-SB4

5 Abou-Rass  
| MAR-SB5

### ANGLED



2 Abou-Rass  
| MAR-B2

3 Abou-Rass  
| MAR-B3



1 Abou-Rass  
| MAR-B1

4 Abou-Rass  
| MAR-B4

5 Abou-Rass  
| MAR-B5



## MICROSURGICAL DR. BERTRAND KHAYAT FILLING INSTRUMENTS & PLUGGERS



### Khayat Retrofilling

| PF18ABK6

This versatile Khayat filling instrument has one angled and one straight spatula end. Useful for complex, deep apical treatments.



### Khayat Plugger

| PLGBK6

The Khayat Apical Plugger, with its 4.5mm and 6.0mm working ends, is ideal for packing retrofilling materials. It was specifically designed for use in deep canal preparation.

### PERMA SHARP GENERAL TISSUE PLIERS



### Khayat

| TP5072

The Khayat The Perma Sharp Tissue Pliers combine the advantages of "plain" carbide inserts in limiting soft tissue trauma with the ergonomic benefits of a sculpted handle.

### PERMA SHARP CASTROVIEJO NEEDLE HOLDER



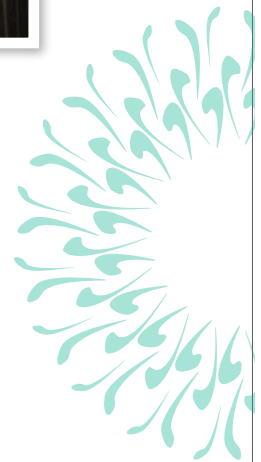
### Khayat

| NH5021RC

The Perma Sharp Castroviejo Needle Holder combines a curved beak with the maneuverability provided by its round handle. (Recommended for suture sizes 5.0, 6.0, 7.0.)



Dr. Bertrand Khayat's Endodontic Surgery Kit includes a specifically designed apical plugger and retrofilling instrument which allow clinicians better access during the surgical procedure.



## Dr. Bertrand Khayat Endodontic Surgical Kit

| IMKHAYAT2

Large Signature Series® 20 Instrument Cassette, Blue*	IM4208
#5 Scalpel Handle, European Style, Round	10-130-05E
Microsurgical Scalpel Blade/Mirror Handle, Stainless Steel	SHDPV
Micro Mirror Round 2.5mm	MM4
NEW – Khayat Apical Plugger with Satin Steel® Handle	PLGBK6
NEW – Khayat Filling Instrument with Satin Steel Handle	PF18ABK6
85 Lucas Surgical Curette, Spoon Shape, Short Satin Steel Handle	CL856
Velvart Apical Plugger with Satin Steel Handle	PLGVEL56
NEW – Perma Sharp® General Tissue Pliers, 15cm/6"	TP5072
PR-3 Prichard Periosteal, with Satin Steel Handle	PPR3S6
13/14 Columbia Curette, Universal with Satin Steel Handle	SC13/146
34/35 Jacquette Scaler, Miniature, Posterior, with Satin Steel Handle	SJ34/356
89/92 Carver Discoid-Cleoids, with Satin Steel Handle	CD89/926
DG 16/17 Endodontic Explorer, with Satin Steel Handle	EXDG16/176
Cawood-Minnesota Retractor	CRM2
NEW – Perma Sharp Needle Holder, Castroviejo Curved, 14cm/5", Round Handle	NH5021RC
14 LaGrange Double-Curved Super Cut Scissors	S14SC

All instruments sold in full kit sets are also available for individual purchase.

\*Kit includes hinged instrument clips.



## MICROSURGICAL PERIOSTEAL ELEVATORS



**Al-Fouzan**  
**| HMPAF1**

Two bends special designed small oval shaped periosteal elevator with reduced working ends, allowing the instrument to reach difficult areas, particularly indicated for elevation of interdental papilla in the interproximal areas without traumatizing the tissues during flap elevation.



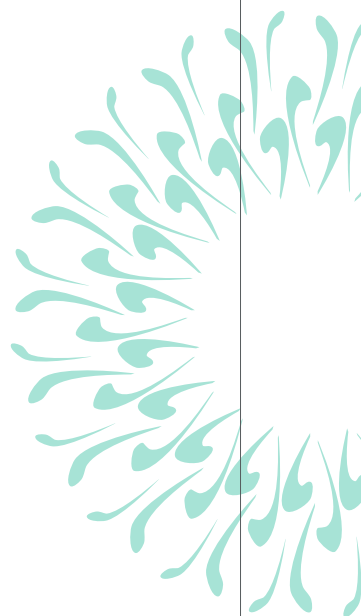
**Al-Fouzan**  
**| MPAF3**

Two bends periosteal instrument elevators with medium and large oval shaped ends, enabling delicate periosteal tissue retraction and better control over the instruments.



**Al-Fouzan**  
**| MPAF3**

Two bends periosteal instrument elevators with medium and large oval shaped ends, enabling delicate periosteal tissue retraction and better control over the instruments.





## MICROSURGICAL CURETTES

Three angulated cures useful for curettage of granulomatous tissue, cyst removal and debridement of surfaces difficult to reach. Furthermore, they can decorticalize the defect bone walls exposing the narrow cavities, improving the osteogenic potential of the defect.



Al-Fouzan  
| MCAF1



Al-Fouzan  
| MCAF2



Al-Fouzan  
| MCAF3





# MICROSURGICAL PROF. KHALID S. AL-FOUZAN EXPLORERS

## ENDODONTIC EXPLORERS

Special designed endodontic explorer comes in two different sizes and a thick shaft to minimize bending of the instrument under pressure providing optimal tip performances. It also comes with sharp tips which improves sounding of the bone and helps in perforating through the lesions, it can also be used for canal orifice detection during conventional root canal treatment.

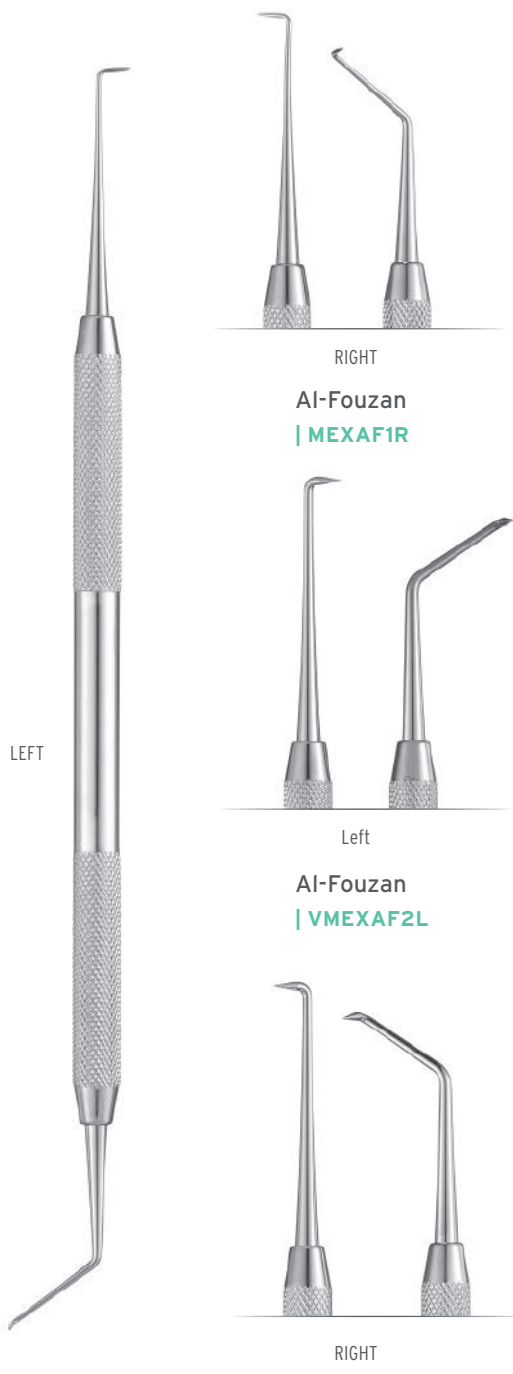


Al-Fouzan  
| EXAF1

Al-Fouzan  
| EXAF2

## MICROSURGICAL RETROGRADE ENDODONTIC EXPLORERS

Sharp 90° angled retrograde endodontic explorer which comes in two different sizes, enabling the reach of difficult retrograde surfaces. It improves detection of the retrograde canal orifice and provides optimal ultrasonic tip performances.



RIGHT

Al-Fouzan  
| MEXAF1R

Left

Al-Fouzan  
| VMEXAF2L

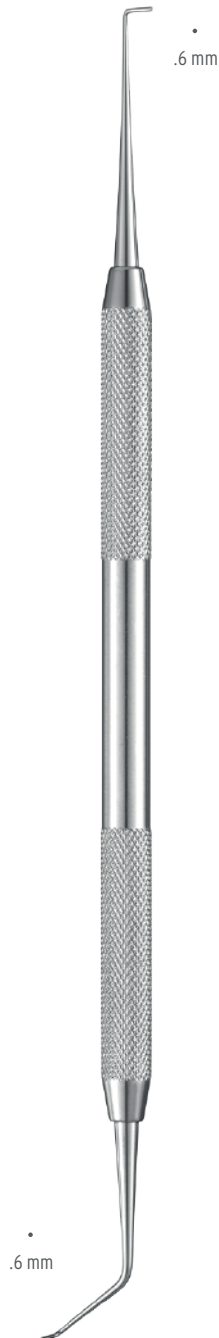
RIGHT

Al-Fouzan  
| MEXAF2R



Special designed double ended small and medium retrograde pluggers with one angulated tip useful to reach difficult orifices. Straight ends are used for direct access orifices retrofill condensation.

Double ended off set-angled instrument with flat end allowing easy adaptability of the retrograde filling material, providing increased access and better visibility, with a spherical round end for burnishing retrograde material in place.



Left  
| MPLGAF1L



Right  
| MPLGAF1R



Left  
| MPLGAF2L



Right  
| MPLGAF2R



Left  
| MBPFIAFL

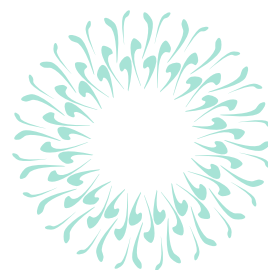
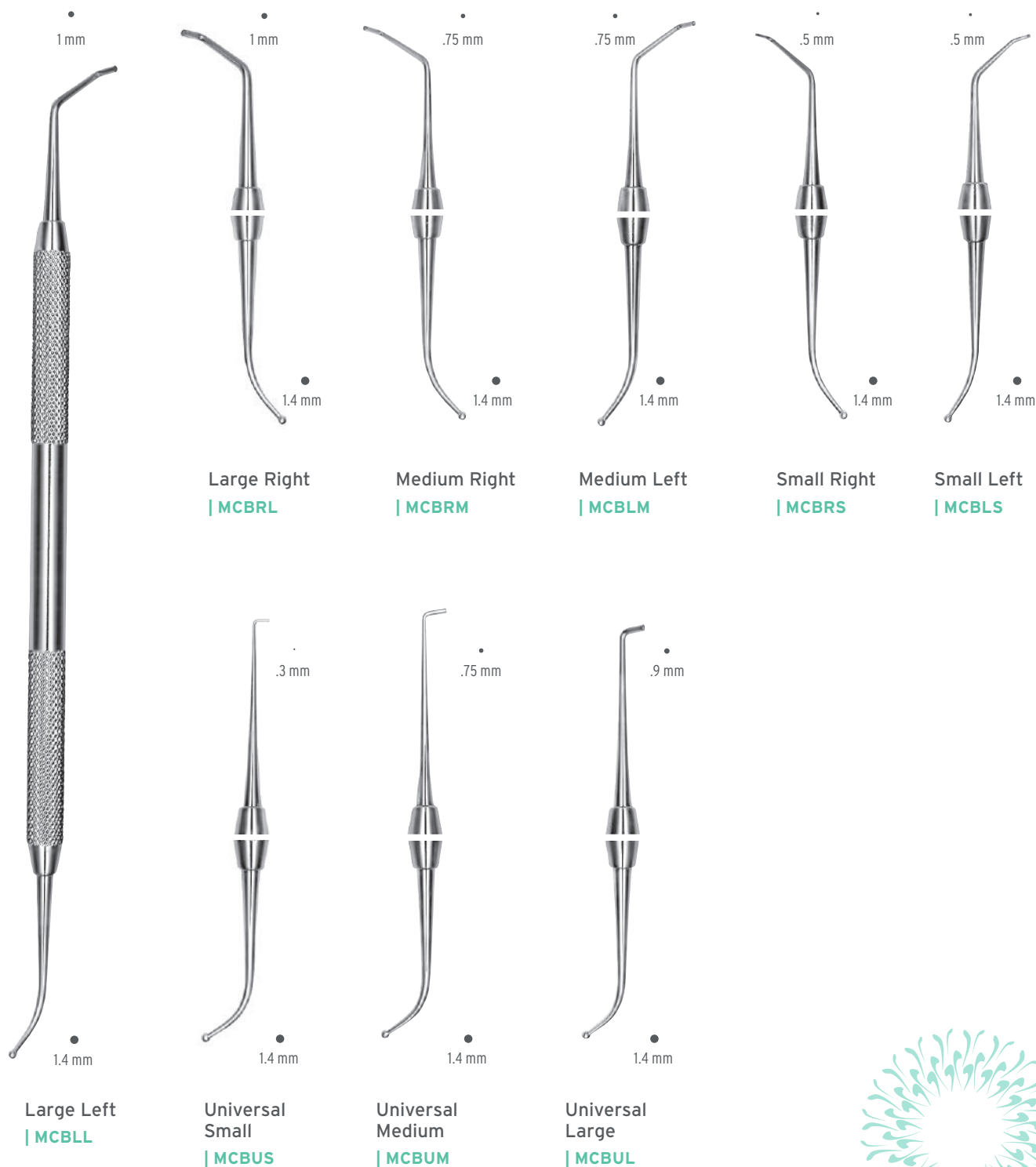


Right  
| MBPFIAFR



## MICROSURGICAL CONDENSERS/BURNISHERS

These versatile double-ended instruments combine a condenser on one end and a ball burnisher on the other end. The plugger ends feature universal, right and left designs and come in small, medium and large sizes.





## RETROFILLING

Hu-Friedy has several double-ended apical filling instruments to choose from.



**Left Apical**

| MRFL

The left of two paired instruments that are used for filling, condensing and burnishing.

**Right Apical**

| MRFR

The right of two paired instruments that are used for filling, condensing and burnishing.

## PLUGGERS

These pluggers give the clinician very different working ends for enhanced maneuvering and versatility.



**Velvart**

| PLGVEL56

## DOUBLE ENDED EXPLORER

These pluggers give the clinician very different working ends for enhanced maneuvering and versatility.



**Explorer**

| MEX1

A popular, basic apical explorer used to initiate the tracking groove in the root tip, and for general exploration and probing.

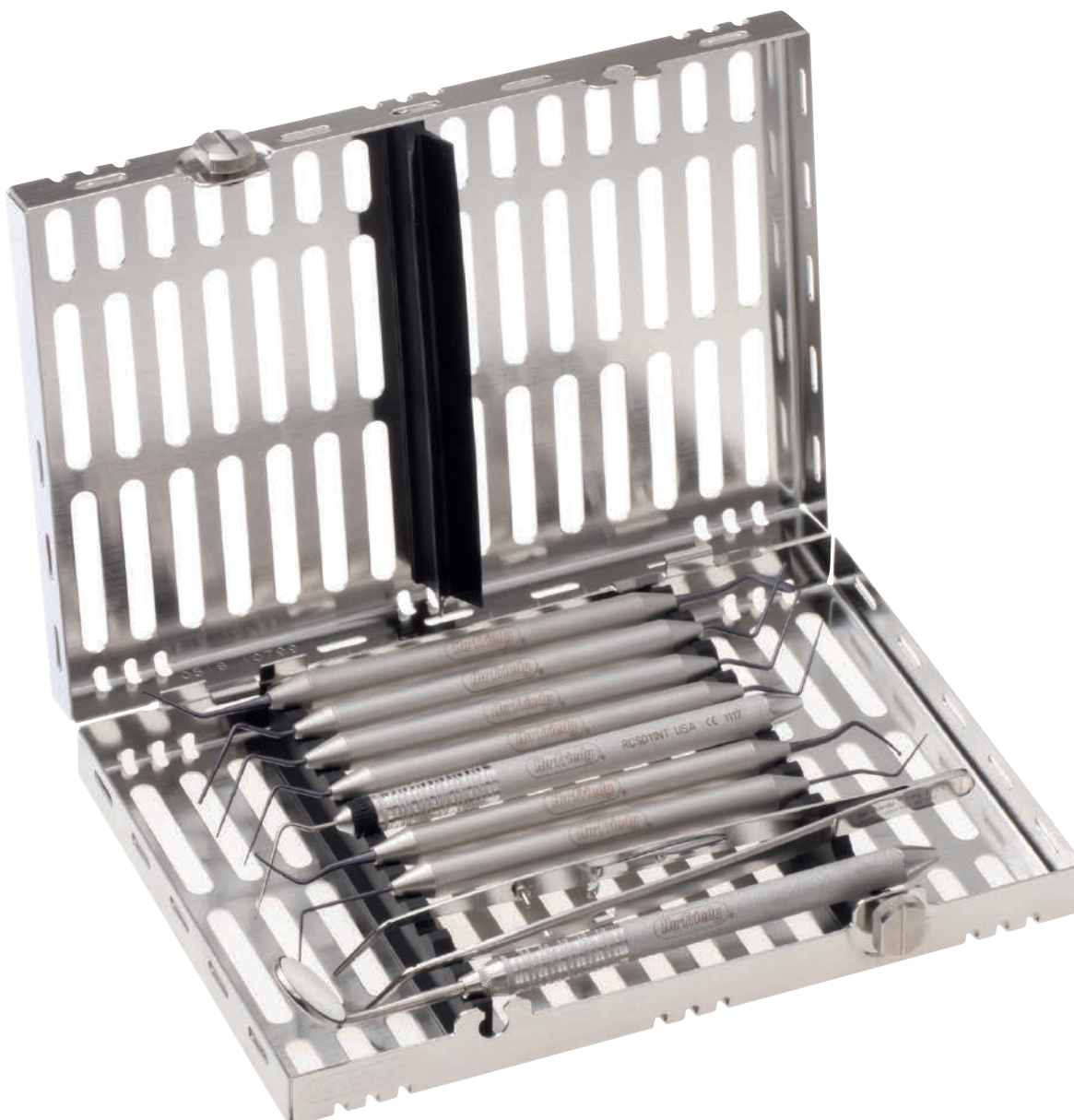


## ENDODONTIC KIT

### Basic Endodontic Kit

| ENDOKIT.

MH6 Cone Socket Mirror Handle, Satin Steel	MH6
4 FS CS Mirror, Single Sided, Single	MIR4
#1 Endo Dressing Pliers (Locking)	EPL1
#DG16 DE Endodontic Explorer, Black Line	EXDG16X
#31L DE Endodontic Excavator, Black Line	EXC31LX
#D11NT SE Root Canal Spreader	RCSD11NT
#1/3 DE Root Canal Plugger, Black Line	RCP1/3X
#5/7 DE Root Canal Plugger, Black Line	RCP5/7X
#9/11 DE Root Canal Plugger, Black Line	RCP9/11X
#1 DE Glick Plastic Plugger, Black Line	RCPGL1X





# EXPLORERS

Hu-Friedy's endodontic explorers are made from a special blend of alloy which provides the flexibility, strength, tactile sensitivity and resilience clinicians need when exploring and assessing the treatment site. They are available in several double-ended designs and handles.

## BLACK LINE



DG16  
| EXDG16X

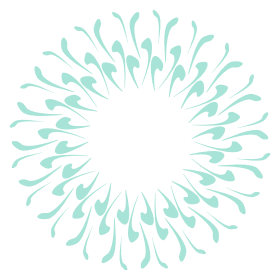
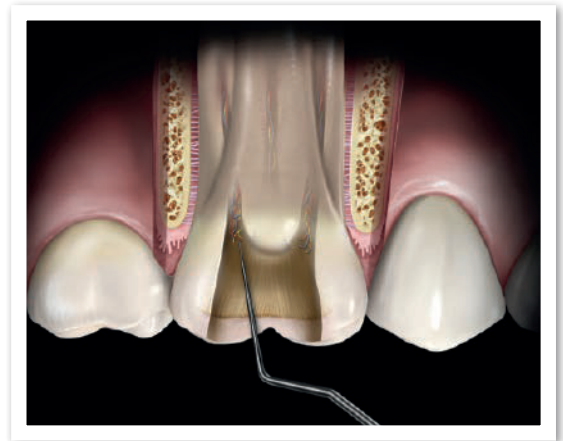
DG16/17  
| EXDG16/17X



DG16  
| EXDG16  
Handle options: #6, #7, #31  
| EXDG16T

DG16/17  
| EXDG16/17  
Handle: #31

DG16/23  
| EXDG16/23  
Handle: #31

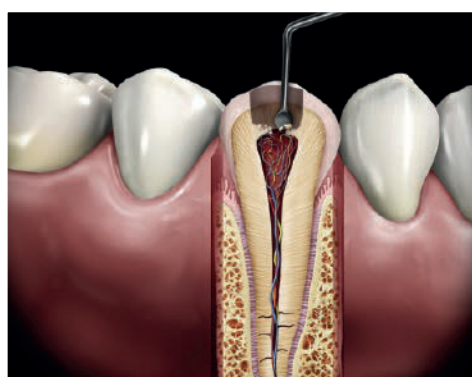
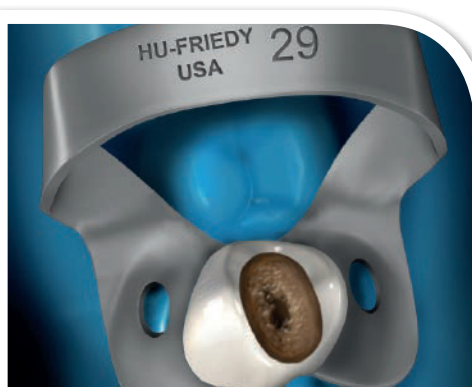




# EXCAVATORS

Hu-Friedy's endodontic excavators feature extended-length shanks and are meticulously handcrafted from the highest grade stainless steel. They help the clinician access the pulp chamber for easy and efficient removal of dentin. The result is a superior clinical outcome and improved efficiency.

## BLACK LINE





## ENDODONTIC ACCESSORIES

In addition to critical procedural instruments such as spreaders, pluggers and rubber dam clamps, endodontic accessories, the “staples” of the office, are available to complete the line-up of Endo Essentials.

### POST & SILVER POINT REMOVAL FORCEPS



Steiglitz Straight  
5-1/2" (14 cm)\*

| RFSTR



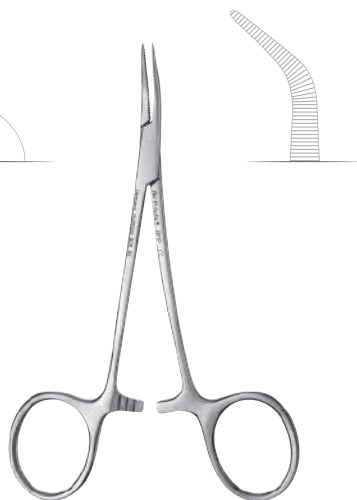
Steiglitz (Archer) 45°  
5-1/4" (13-1/2 cm)\*

| RF45



Steiglitz 90°  
4-3/4" (12 cm)\*

| RF90



Peet 45°  
4-3/4" (12 cm)\*

| RFP

\*Pictured at 50%.



1 Mirror Handle  
| MH6692K  
With millimeter  
scale.



6" Stainless  
Steel Ruler  
| CLR6

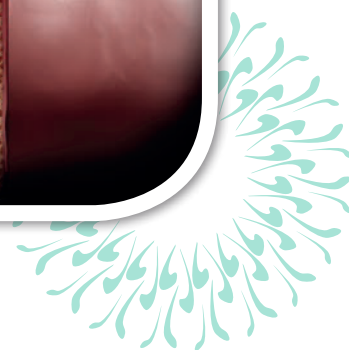
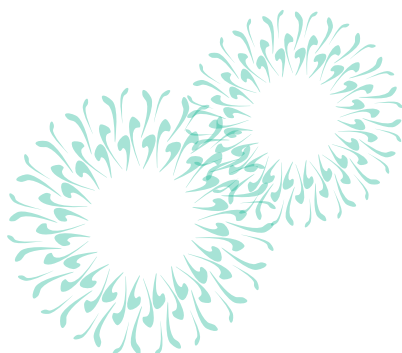
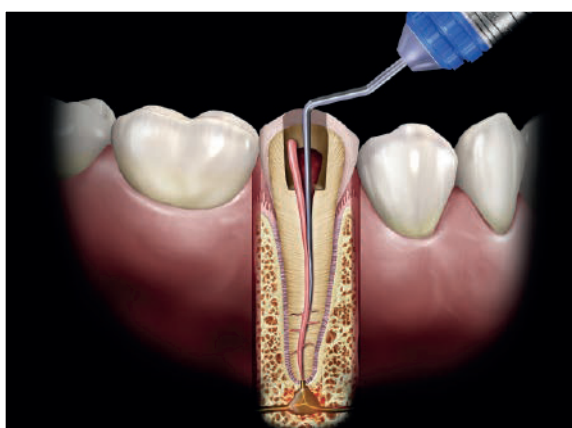


6-1/2" (16-1/2 cm)  
Locking Pliers  
| EPL1

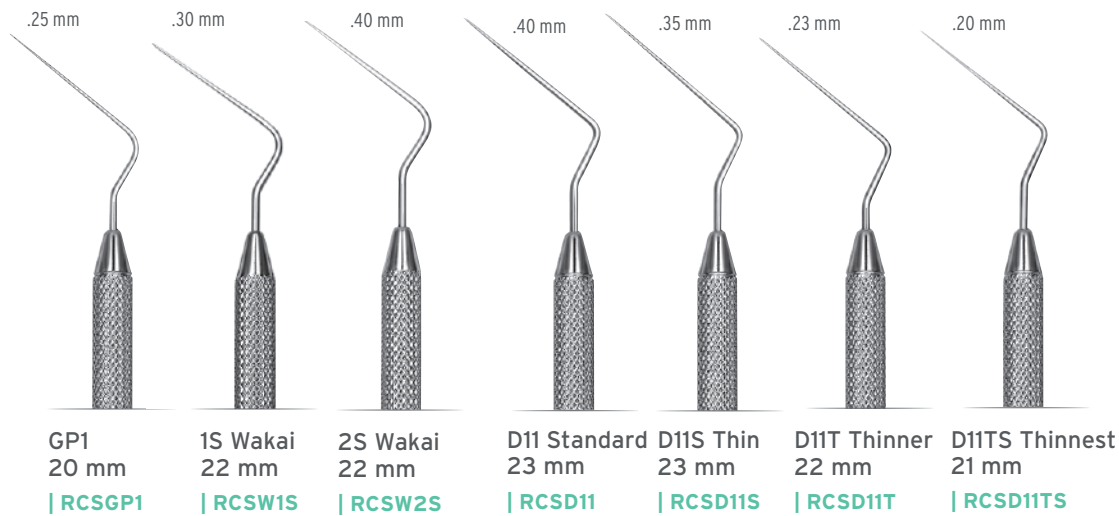


## SPREADERS

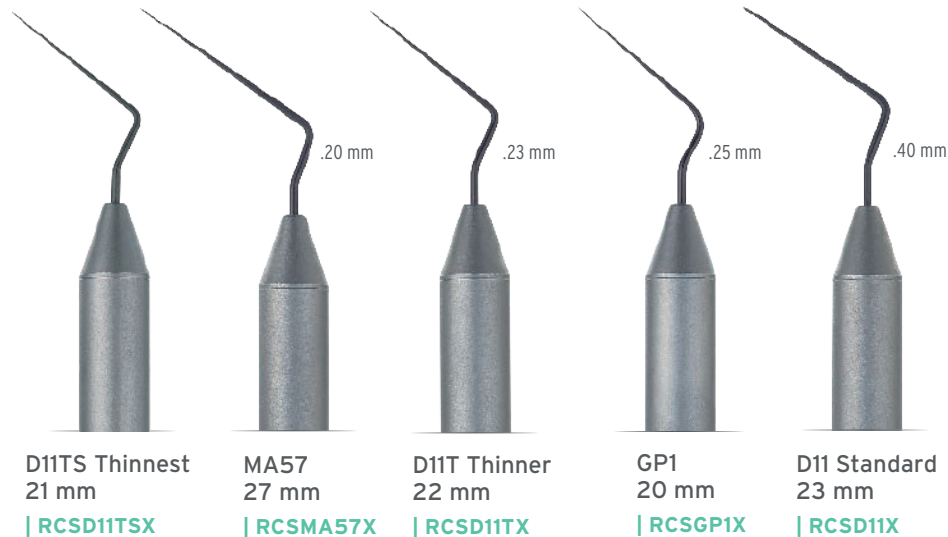
Hu-Friedy manufactures a wide variety of spreaders, all handcrafted from the finest stainless steel to precise specifications. Choose from NiTi spreaders, ISO sized spreaders with color coded handles for easy identification, heat carriers, and a variety of other popular spreaders. Our spreaders help the clinician gain access into the most difficult canals for optimal compaction of filling material during lateral condensation.





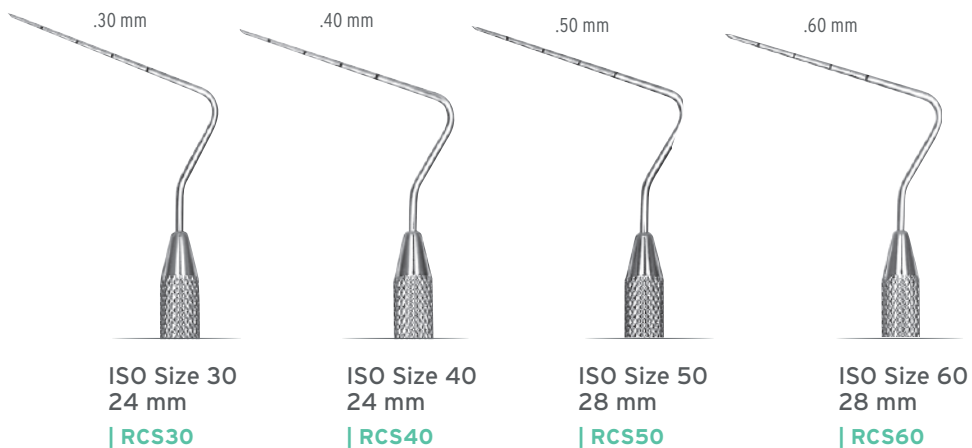


## BLACK LINE



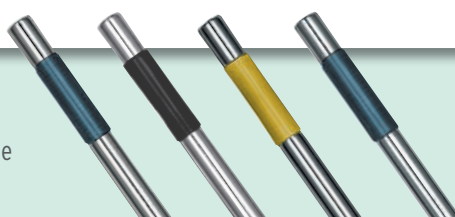
## ISO SIZED

ISO sized spreaders are color-coded for identification and convenience.



\*D1=Diameter of instrument 1 mm from the tip. These measurements (i.e., .30) appear next to the tips of the instruments.

ISO Spreaders have an ISO color-coded band on the handle for ease of identification during usage: #30-Blue, #40-Black, #50-Yellow, #60-Blue



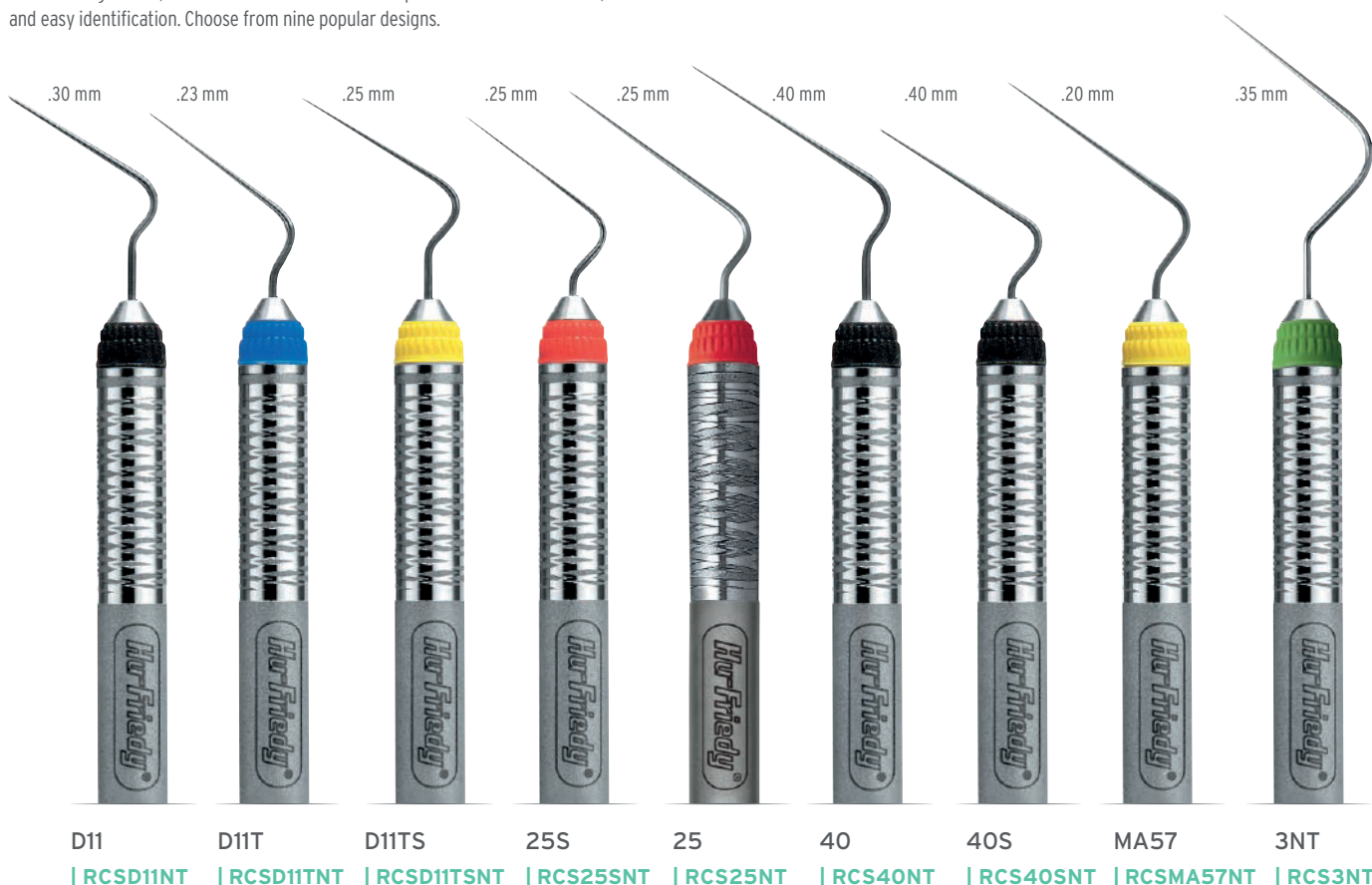




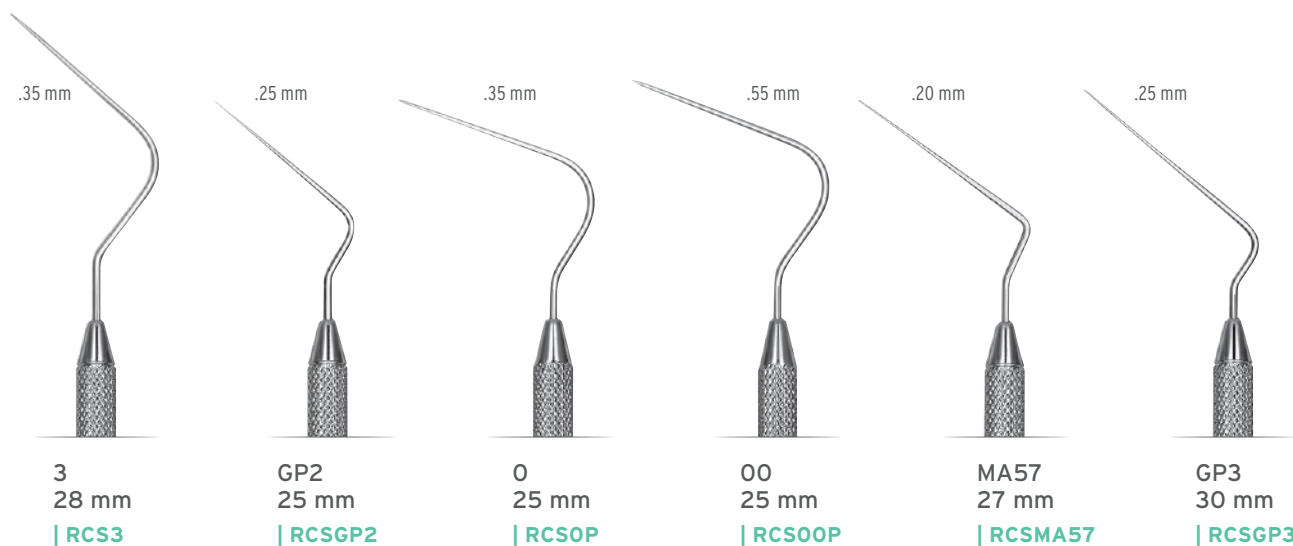
# SPREADERS & HEAT CARRIERS\*

## NICKEL TITANIUM ENDODONTIC SPREADERS\*

Nickel Titanium, or NiTi, points provide these spreaders with extra flexibility and “memory” while the ergonomic, color-coded Satin Steel handles provide maximum comfort, control and easy identification. Choose from nine popular designs.



## HEAT CARRIERS\*



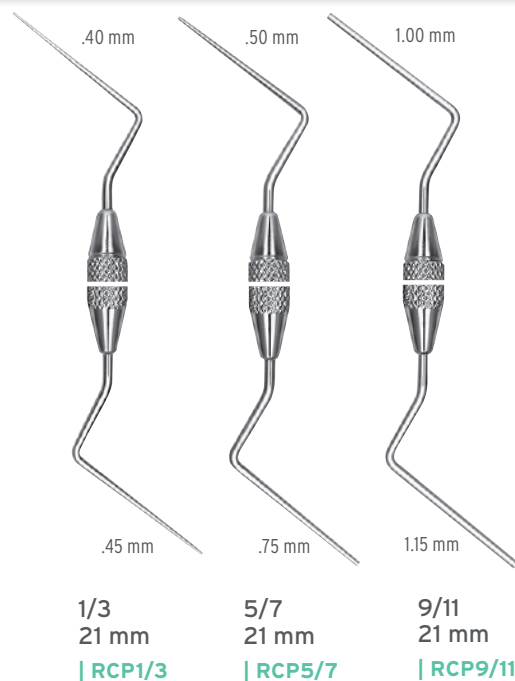
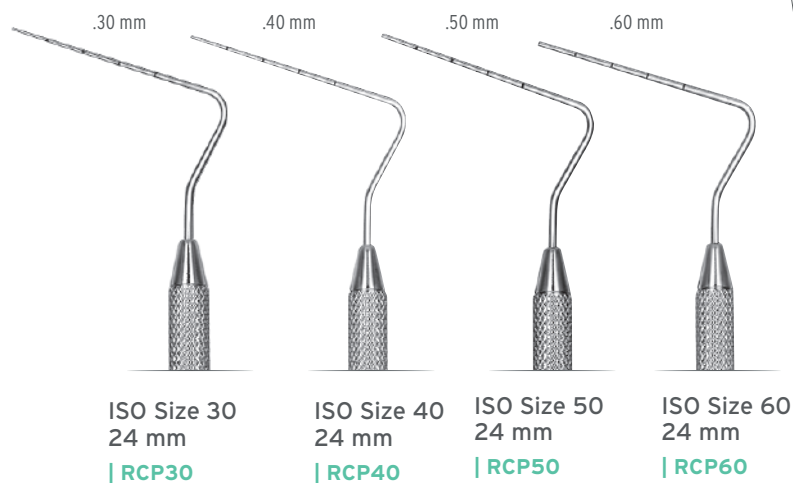
\*D1=Diameter of instrument 1 mm from the tip. These measurements (i.e., .30) appear next to the tips of the instruments.



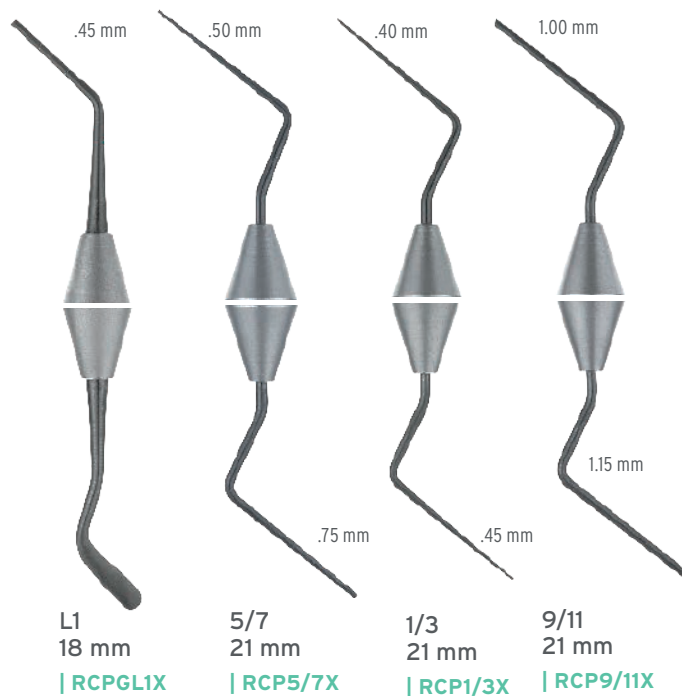
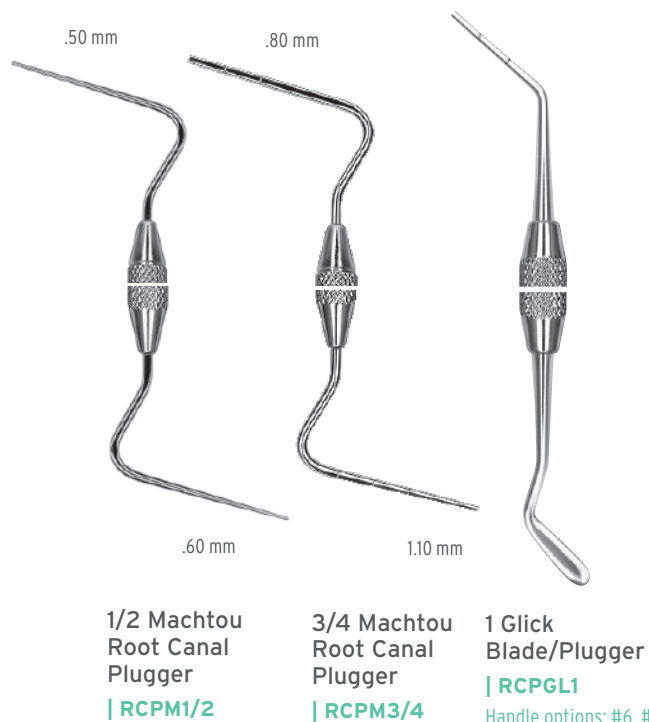
## PLUGGERS

When performing vertical condensation, choose from ISO-sized anterior or posterior options, Machtou, the Glick Blade/Plugger or other options. These pluggers are handcrafted to exact specifications using the finest materials.

### ISO SIZED PLUGGERS\*

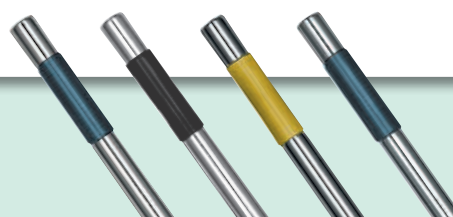


### BLACK LINE



\*DI=Diameter of instrument 1 mm from the tip. These measurements (i.e., .30) appear next to the tips of the instruments.

ISO Pluggers have an ISO color-coded band on the handle for ease of identification during usage: #30-Blue, #40-Black, #50-Yellow, #60-Blue.

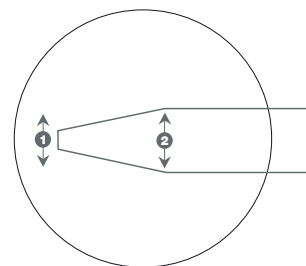




## SLEIMAN PLUGGERS / HEAT CARRIERS

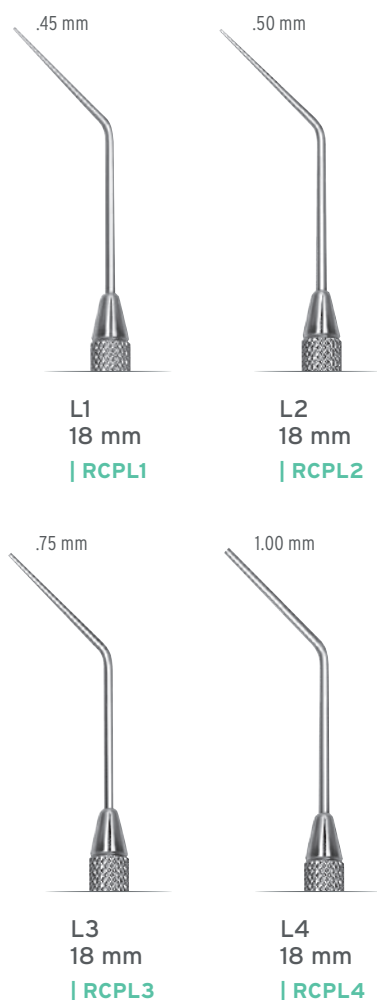


### TAPERED WORKING END



	①	②
RCPSL172	0.40 mm	0.74 mm
RCPSL275	0.50 mm	0.80 mm
RCPSL376	0.66 mm	0.96 mm
RCPSL478	0.78 mm	1.20 mm
RCPSL577	0.90 mm	1.45 mm

### LUKS



\*D1=Diameter of instrument 1 mm from the tip. These measurements (i.e., .30) appear next to the tips of the instruments. Marked at 5 mm intervals to assess penetration depth.



## ANTERIOR

Anterior condensers are 7 mm longer than posterior condensers.



8A  
29 mm  
| RCP8A



8-1/2A  
29 mm  
| RCP8-1/2 A



9A  
29 mm  
| RCP9A



9-1/2 A  
29 mm  
| RCP9-1/2A



10A  
29 mm  
| RCP10A



10-1/2A  
29 mm  
| RCP10-1/2A



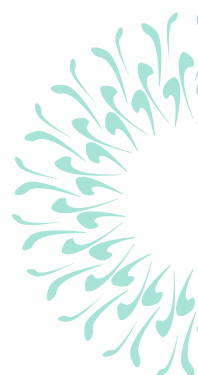
11A  
29 mm  
| RCP11A



11-1/2A  
29 mm  
| RCP11-1/2A



12A  
29 mm  
| RCP12A



\*D1=Diameter of instrument 1 mm from the tip. These measurements (i.e., .40) appear next to the tips of the instruments. The terms "Condensers" and "Pluggers" are interchangeable.



POSTERIOR



8  
22 mm  
| RCP8



8-1/2  
22 mm  
| RCP8-1/2



9  
22 mm  
| RCP9



9-1/2  
22 mm  
| RCP9-1/2



10  
22 mm  
| RCP10



10-1/2  
22 mm  
| RCP10-1/2



11  
22 mm  
| RCP11



11-1/2  
22 mm  
| RCP11-1/2



12  
22 mm  
| RCP12

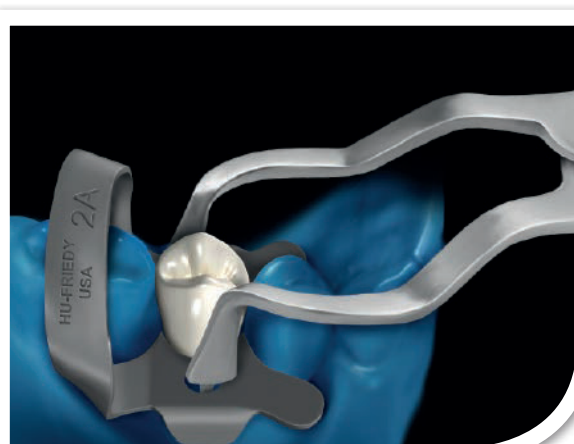
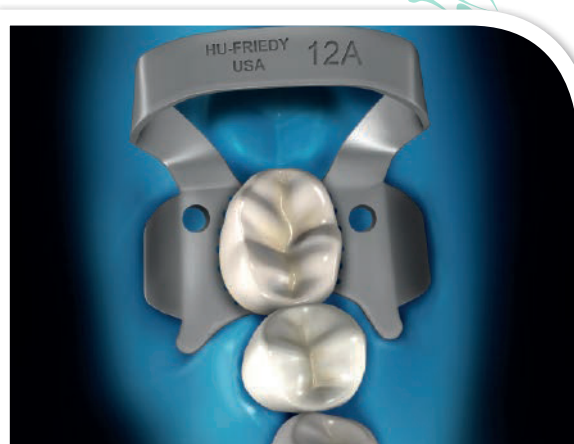
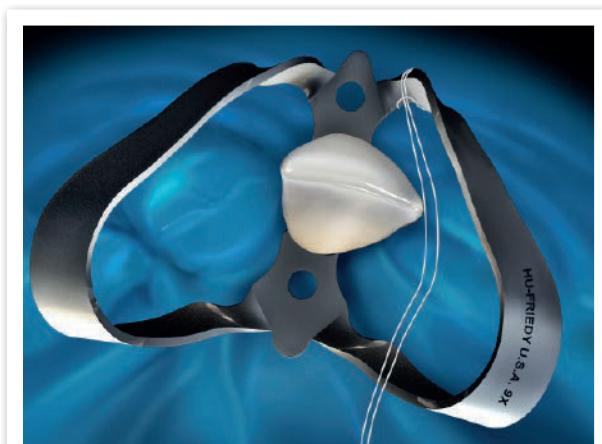
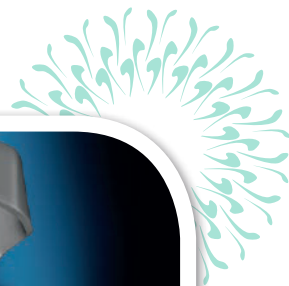
\*D1=Diameter of instrument 1 mm from the tip. These measurements (i.e., .40) appear next to the tips of the instruments. The terms "Condensers" and "Pluggers" are interchangeable.





## RUBBER DAM CLAMPS

Hu-Friedy rubber dam clamps are made in the USA from proprietary Satin Steel for corrosion resistance, superior strength, and a fine balance between flexibility and memory. The matte finish we apply to our clamps absorbs and dissipates light instead of reflecting it back, so you can experience a comfortable field of vision that is easier on the eyes - to help you perform at your best.





# RUBBER DAM CLAMPS

## RUBBER DAM CLAMPS OPTIONS

Our rubber dam clamps are available in both Black Line and Standard Matte finishes.



**Black Line  
Part Code**  
RDCMOOX  
RDCW4X

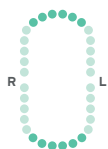


**Non-Coated  
Part Code**  
RDCMOO  
RDCW4

## ANTERIOR



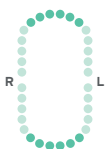
**106RX**  
| RDCM106RX



Flat jaws and high bow for small lower canines and first premolars.



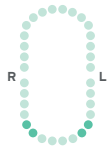
**106LXw**  
| RDCM106LX



Slightly offset jaws for labial caries on anterior teeth.



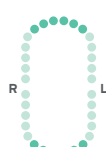
**OOX**  
| RDCMOOX  
| RDCMOO



Flat jaws and high bow for small lower canines and first premolars.



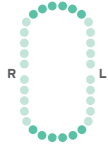
**6X**  
| RDCM6X  
| RDCM6



Slightly offset jaws for labial caries on anterior teeth.



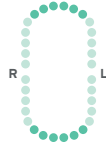
**9X**  
| RDCM9X  
| RDCM9



Offset flat jaws and stiff bow for anterior teeth.



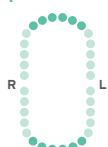
**9SX**  
| RDCM9SX  
| RDCM9S



Offset flat serrated jaws for anterior teeth.



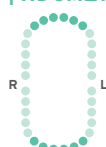
**212X**  
| RDCM212X  
| RDCM212



Flat jaws for labial caries on anterior teeth.



**212SAX**  
| RDCM212SAX  
| RDCM212SAX

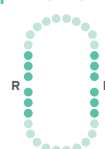


Slightly offset staggered jaws for odd shaped anteriors.

## PREMOLARS



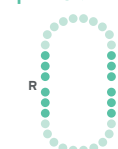
**OX**  
| RDCMOX  
| RDCMO



Flat jaws and high bow for longer premolars.



**1X**  
| RDCM1X  
| RDCM1



Slightly festooned jaws for upper premolars.



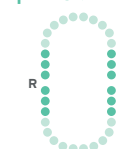
**1AX**  
| RDCM1AX  
| RDCM1A



Deeply festooned jaws for canines and premolars.



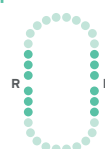
**2X**  
| RDCM2X  
| RDCM2



Flat jaws for premolars.



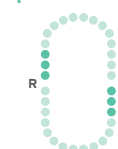
**2AX**  
| RDCM2AX  
| RDCM2A



Flat jaws for larger premolars.



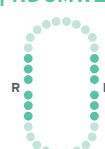
**2ASX**  
| RDCM2ASX  
| RDCM2AS



Flat serrated jaws for larger premolars.



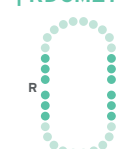
**W2X**  
| RDCMW2X  
| RDCMW2



Flat jaws for premolars.



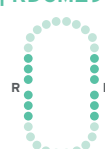
**27NX**  
| RDCM27NX  
| RDCM27N



Slightly festooned jaws for premolars.



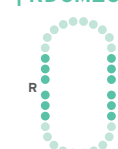
**29X**  
| RDCM29X  
| RDCM29



Flat jaws for lower premolars.



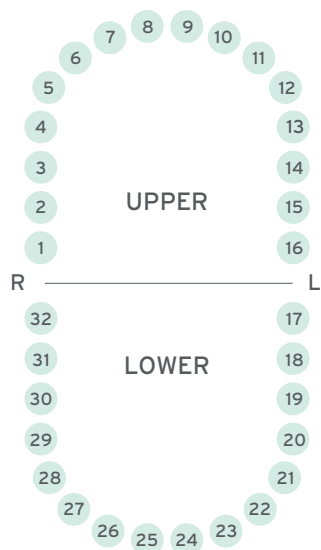
**209X**  
| RDCM209X  
| RDCM209



Small, flat jaws with stiff bow for lower premolars.



## MOLARS (GENERAL)



8AX



Deeply festooned four-point jaws for molars.

8ADX



Deeply festooned jaws and extended bow for distal access to molars.

W8AX



Slightly festooned jaws for molars.

10X



Flat jaws designed for small upper left and lower right molars; paired with RDCM11.

11X



Flat jaws designed for small upper right and lower left molars; paired with RDCM10.

14X



Deeply festooned jaws for partially erupted or irregularly shaped molars.

14AX



Deeply festooned jaws for partially erupted or irregularly shaped molars; larger than RDCM14.

W14AX



Deeply festooned jaws for partially erupted or irregularly shaped molars.

18X



Flat jaws and stiff bow for molars.

24X



Flat jaws for upper right and lower left molars; paired with RDCM25.

25X



Flat jaws for upper left and lower right molars; paired with RDCM24.

27X



Flat jaws for large molars.

56X



Slightly festooned jaws for large molars.

56SX



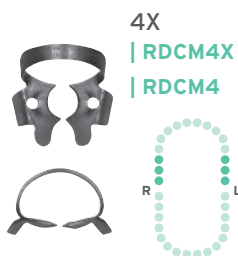
Slightly festooned serrated jaws for large partially erupted or irregularly shaped molars.

The matte finish reduces operator light reflection for a comfortable field of vision that is easy on the eyes so you can perform at your best.

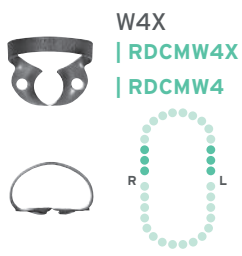


# RUBBER DAM CLAMPS

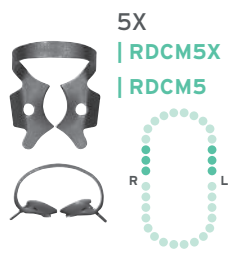
## UPPER MOLARS



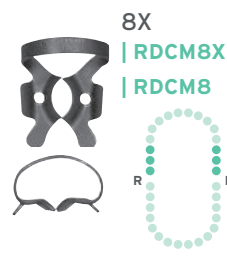
Flat narrow jaws for small upper molars.



Flat narrow jaws for small upper molars.



Slightly festooned jaws for large upper molars.



Deeply festooned jaws for upper molars.



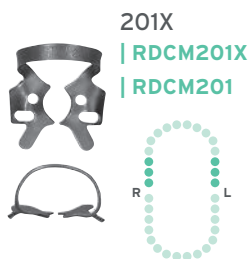
Flat jaws for upper molars.



Offset jaws for upper right molars; paired with RDCM31.



Offset jaws for upper left molars; paired with RDCM30.

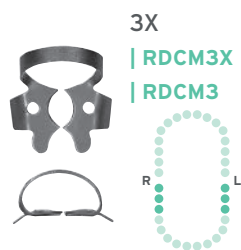


Slightly festooned jaws for upper molars.



Slightly festooned jaws for large upper molars.

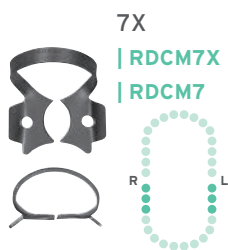
## LOWER MOLARS



Flat narrow jaws for small lower molars.



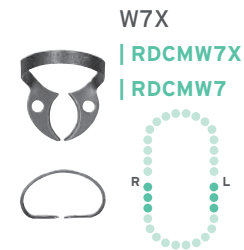
Flat narrow jaws for small lower molars.



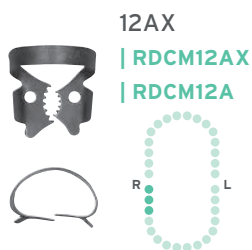
Flat jaws for lower molars.



Slightly reversed festooned jaws for large lower molars.



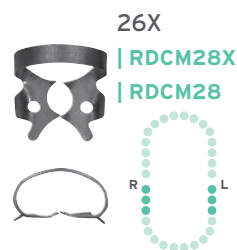
Flat jaws for lower molars.



Serrated offset jaws for lower right molars; paired with RDCM13A.



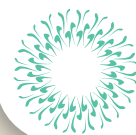
Serrated offset jaws for lower left molars; paired with RDCM12A.



Slightly reversed festooned jaws for small lower molars.



Flat jaws for lower molars.



## RUBBER DAM CLAMP ACCESSORIES & KITS

### Rubber Dam Clamp Organizing Board\*\*

#### | RDCOB

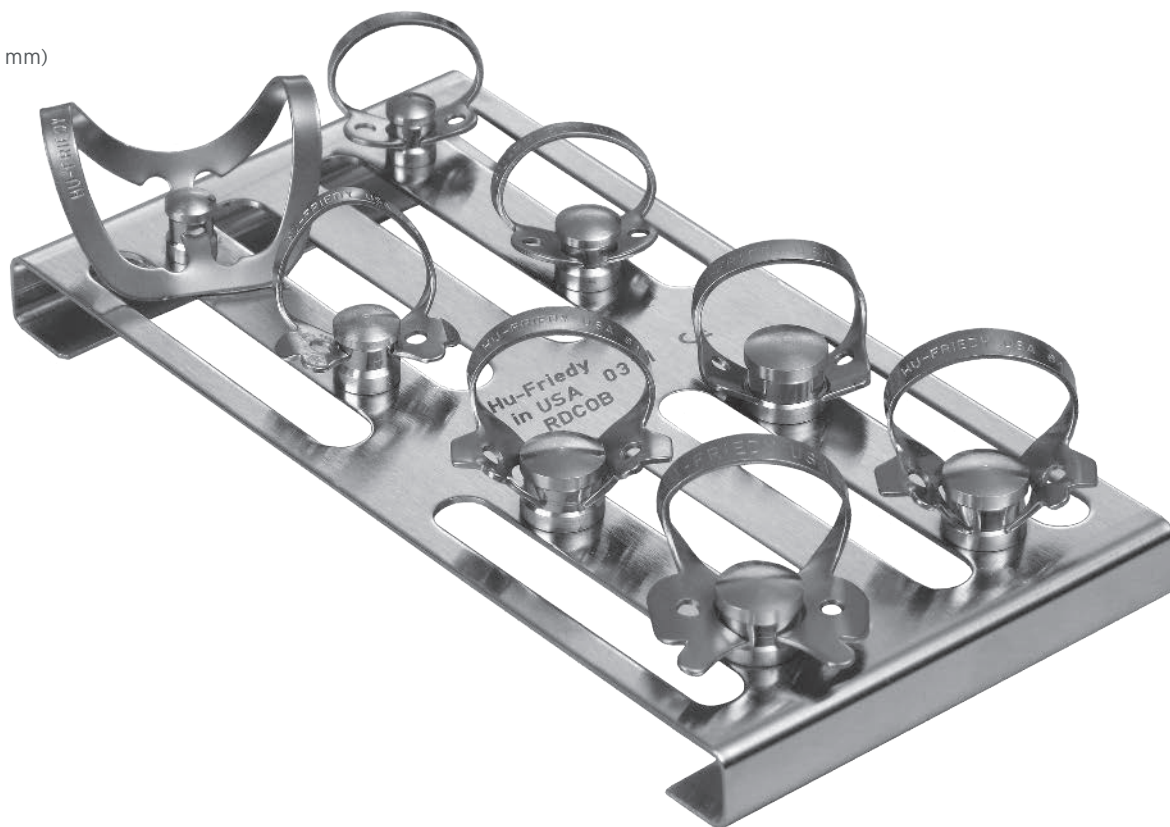
Store, sterilize and organize with eight pegs that securely hold your clamps. Clamps not included.

Dimensions:

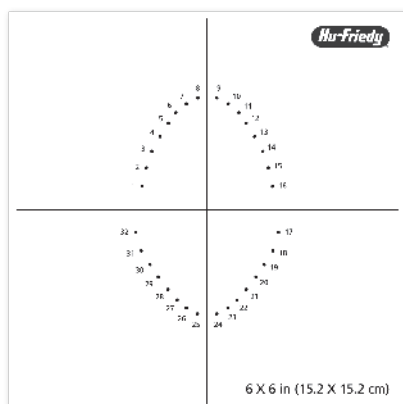
4.62" x 2.4" x .375"

(117 mm x 61 mm x 10 mm)

Our line of rubber dam clamps wouldn't be complete without these endo-essential accessories and kits. The IMS section of Endo Essentials includes IMS part boxes that are useful for clamp storage and sterilization.



## RUBBER DAM TEMPLATES

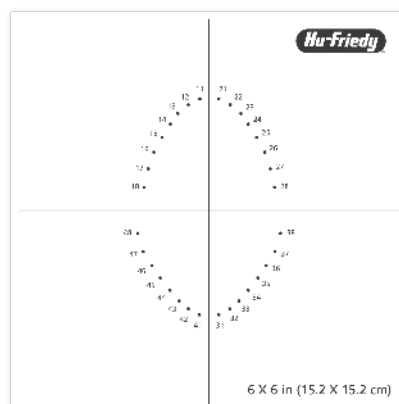


### Universal Rubber Dam Template\*\*

#### | RDTUNIV

Adult template shown.

Pedodontic template also included.



### FDI Rubber Dam Template\*\*

#### | RDTFDI

Adult template shown.

Pedodontic template also included.

\*\*Pictured at 50%.





## RUBBER DAM ACCESSORIES

### RUBBER DAM CLAMP FORCEPS

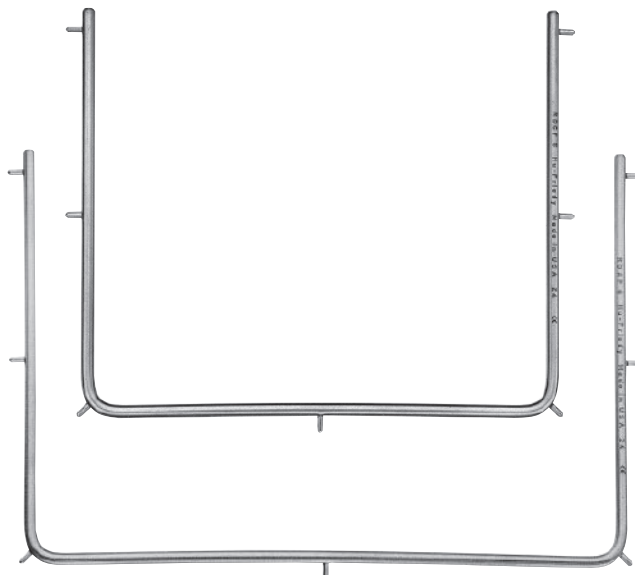


4  
7" (17-1/2 cm)\*\*  
| RDF4



Rubber Dam  
Forceps  
6-1/2" (17 cm)\*\*  
| RDF

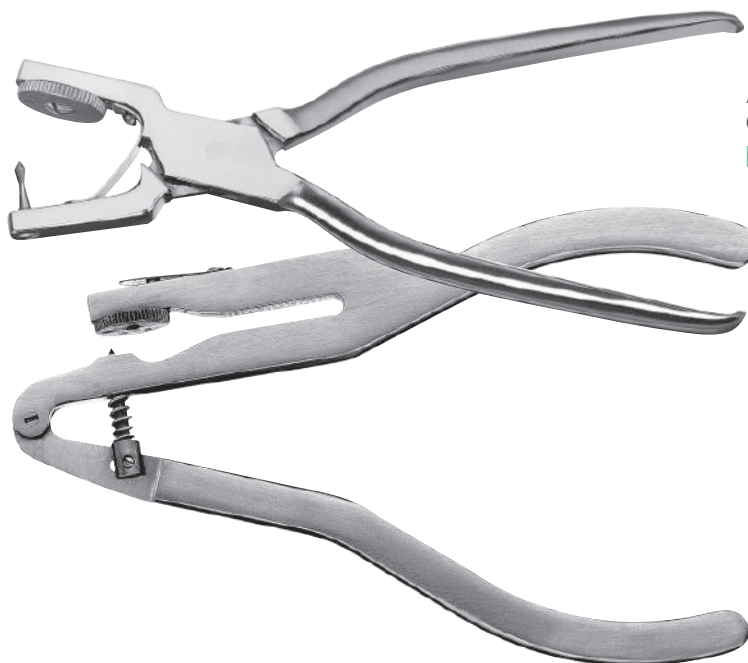
### RUBBER DAM FRAMES



Rubber  
Dam Frame  
Child 5"  
(13 cm)\*\*  
| RDCF5

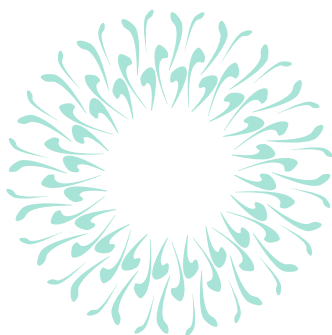
Rubber  
Dam Frame  
Adult 6"  
(15 cm)\*\*  
| RDAF6

### RUBBER DAM PUNCHES



Ainsworth  
6-3/4" (17-1/2 cm)\*\*  
| RDPA

Rubber Dam  
Punch  
6-3/4" (16 cm)\*\*  
| RDP



\*\*Pictured at 60%.

Rubber Dam kits and collections give clinicians more choices from an entire kit to basic clamp set-ups.

## RUBBER DAM KITS

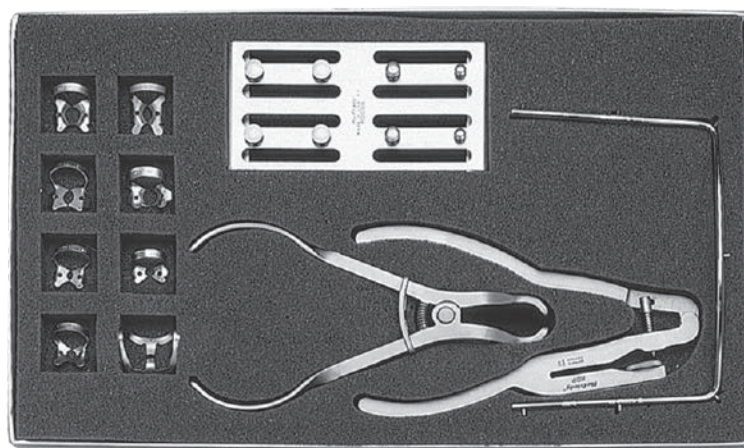
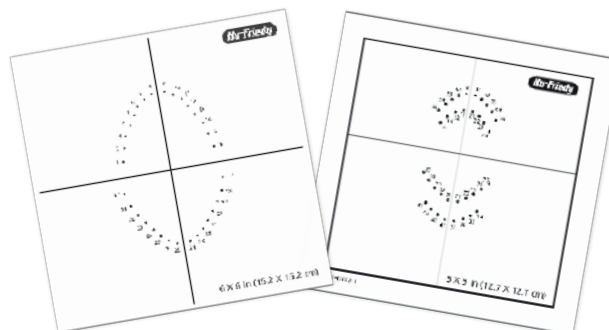


### Rubber Dam Kit

#### | RDKIT

Basic items needed for rubber dam procedures conveniently packaged in a kit (also available individually).

Rubber Dam Clamp Forceps	RDF
Rubber Dam Punch	RDP
Rubber Dam Frame—Adult	RDAF6
Universal Rubber Dam Template	RDTUNIV
FDI Rubber Dam Template	RDTFDI
Rubber Dam Clamp Organizing Board	RDCOB
#0 Satin Steel Rubber Dam Clamp	RDCM0
#1 Satin Steel Rubber Dam Clamp	RDCM1
#2 Satin Steel Rubber Dam Clamp	RDCM2
#7 Satin Steel Rubber Dam Clamp	RDCM7
#8 Satin Steel Rubber Dam Clamp	RDCM8
#8A Satin Steel Rubber Dam Clamp	RDCM8A
#14A Satin Steel Rubber Dam Clamp	RDCM14A
#212 Satin Steel Rubber Dam Clamp	RDCM212



### Rubber Dam Clamp 7 Pack (Satin Steel finish only)

#### | RDCSET7

#00 Satin Steel Rubber Dam Clamp	RDCM00
#2 Satin Steel Rubber Dam Clamp	RDCM2
#7 Satin Steel Rubber Dam Clamp	RDCM7
#8 Satin Steel Rubber Dam Clamp	RDCM8
#8A Satin Steel Rubber Dam Clamp	RDCM8A
#9 Satin Steel Rubber Dam Clamp	RDCM9
#14A Satin Steel Rubber Dam Clamp	RDCM14A



# RUBBER DAM KITS

## Black Line Rubber Dam Clamp Kit 8 clamps & Organizing Board\*\*

### | RDCKITX

Rubber Dam Clamp Organizing Board	<b>RDCOB</b>
#13A Satin Steel Rubber Dam Clamp,	<b>RDCM13AX</b>
#12A Satin Steel Rubber Dam Clamp	<b>RDCM12AX</b>
#27N Satin Steel Rubber Dam Clamp	<b>RDCM27NX</b>
#W8A Satin Steel Rubber Dam Clamp	<b>RDCMW8AX</b>
#212 Satin Steel Rubber Dam Clamp	<b>RDCM212X</b>
#00 Satin Steel Rubber Dam Clampt	<b>RDCM00X</b>
#9 Satin Steel Rubber Dam Clamp	<b>RDCM9X</b>



## Rubber Dam Clamp Kit 8 clamps & Organizing Board

### | RDCSET

#0 Satin Steel Rubber Dam Clamp	<b>RDCM0</b>
#1 Satin Steel Rubber Dam Clamp	<b>RDCM1</b>
#14A Satin Steel Rubber Dam Clamp	<b>RDCM14A</b>
#2 Satin Steel Rubber Dam Clamp	<b>RDCM2</b>
#212 Satin Steel Rubber Dam Clamp	<b>RDCM212</b>
#7 Satin Steel Rubber Dam Clamp	<b>RDCM7</b>
#8 Satin Steel Rubber Dam Clamp	<b>RDCM8</b>
#8A Satin Steel Rubber Dam Clamp	<b>RDCM8A</b>

### | RDCM1



### | RDCM0



### | RDCM14A



### | RDCM2



### | RDCM212



### | RDCM7



### | RDCM8



### | RDCM8AD



\*\*Pictured at 40%.

