



### Package Contents.

Each SEVEN implant comes with a wide range of sterilized components suitable for any clinical scenario. Following our “Make It Simple” philosophy, MIS is proud to be the first to include a sterile single-use final drill with every SEVEN implant, to ensure safe and precise surgical procedures.



mis | MAKE IT SIMPLE

mis | SEVEN  
INTERNAL HEXAGON

MIS scientists and engineers are continually seeking superior materials, technologies and procedures with the aim of developing quality products designed to make implant dentistry effective, safe and simple. The SEVEN implant system is the result of an extensive research and development process, offering a truly innovative solution with a unique combination of surgical and restorative benefits.



**Internal hex.**

MIS SEVEN implants feature an internal hex. connection, assuring proper implant abutment seating, anti-rotational engagement, resistance to lateral forces, excellent esthetic results and more.



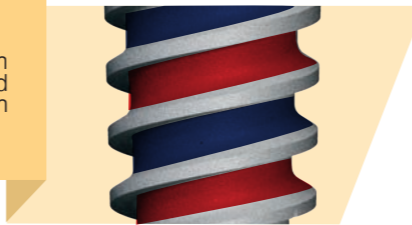
**Micro-rings**

Micro-rings on the implant neck improve BIC (Bone-To-Implant-Contact) at the crestal zone, and reduces pressure on the cortical bone.



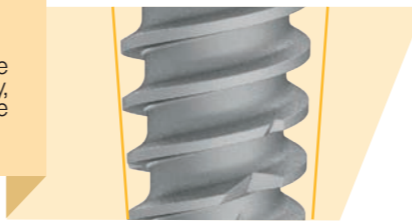
**Dual thread**

The dual thread doubles the implant insertion rate (2.40mm), allowing for a simpler and faster implant placement. The thread design also contributes to stability properties.



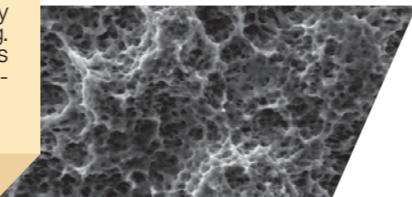
**Conical shape**

Conical, root-shaped geometry and a unique thread design ensure superior primary stability, offering the ultimate choice for a wide range of clinical cases and loading protocols.



**Surface**

Surface roughness and micro-morphology is a result of sand-blasting and acid-etching. MIS proven surface technology provides excellent osseointegration results and long-lasting clinical success.



**Three spiral channels**

Three spiral channels at the apical end of the implant support its self-tapping properties. The channels also collect bone chips in the course of insertion, supporting efficient osseointegration and long-term stability.

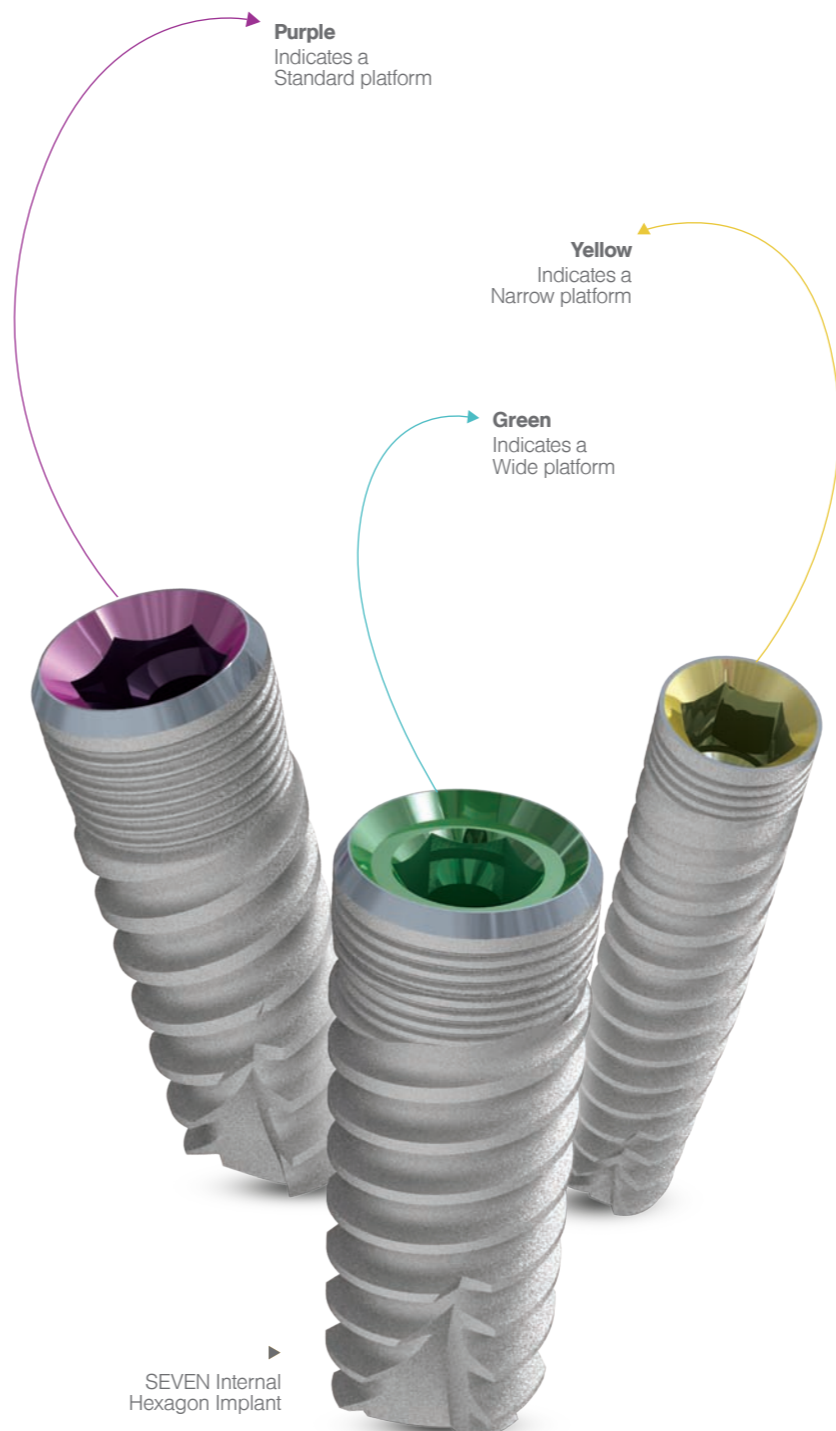


**Domed apex**

The dome shaped apex prevents over-insertion for safer implant placement procedures.



Characteristics.



Surgical Instruments Kit.

Comprising all required tools for SEVEN implant placement procedures, the innovative SEVEN surgical kit is designed to enhance simplicity and safety. The kit includes two types of marking drills, a set of length-based pilot drills and color-coded visual cues for all implant diameters and restorative platforms.

