



ROOT CANAL OBTURBATION

DiaDent's Millimeter Marked Gutta Percha Points & Paper Points

- All DiaDent Points are Hand Jig Rolled to exacting standards.
- They are uniformly tapered and unsurpassed for consistency in sizing.
- All Points are laser inspected to ensure the tightest tolerances surpassing ISO standards.

Millimeter Marked Gutta Percha Points

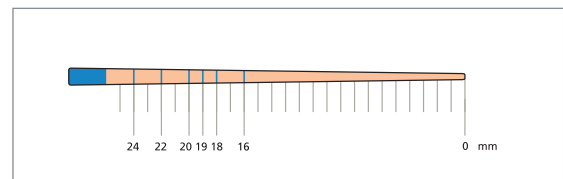
- Quick and easy method for depth measurements.
- Points with mm marking at 16mm, 18mm, 19mm, 20mm, 22mm and 24mm.
- Eliminates apex perforations which may lead to bleeding.
- Reaches the apex, completely seal the entire length of the canal.
- Save chair time with premeasured points.
- Most accurate depth measurements.

Computerized Laser Inspection System

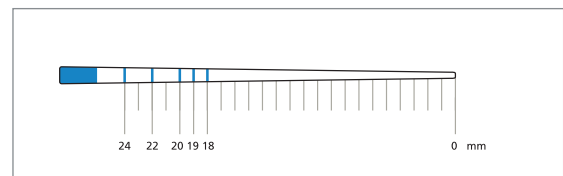
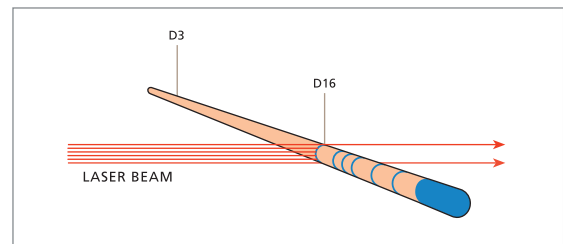
- Each point is inspected by the laser beam.
- Using a laser beam, each DiaDent ML.029 point is individually inspected for diameters at D3 and D16.
- ISO and ADA standard requires the use of 1/100mm incremental measurement units, DiaDent uses 1/1,000mm increments.

Millimeter Marked Paper Points

- Quick and easy method for depth measurements.
- Points with mm marking at 18mm, 19mm, 20mm, 22mm and 24mm.
- Eliminates apex perforations which may lead to bleeding.
- Completely drying the entire length of the canal.
- Save chair time with premeasured points.
- Most accurate depth measurements.

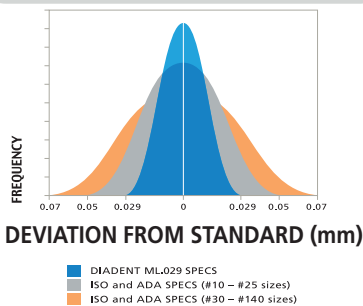


Millimeter Marked

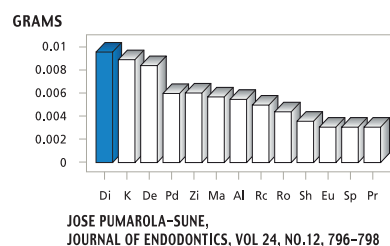


Millimeter Marked

DiaDent Quality Assurance



Comparative absorption of Paper Points, by Brand



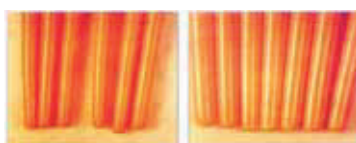
DIADENT PATENTS

- US Patent No. 6,004,133
- International Patents pending.
- European Patents No. 0964656
- United Kingdom Patents No. 0964656
- Deutsches Patents No. EP 0964656

Hand Jig Rolled Points vs Machine Rolled Points

- DiaDent's method of hand rolling the points ensures the following:

DiaDent Hand Jig Rolled Gutta Percha Points



- Consistent, Uniform taper
- Smooth, Rounded Bullet shaped tips
- Readily conforms to shape of canal
- Greater likelihood of optimal apical seal

Machine Rolled Gutta Percha Points



- Inconsistent taper
- Uneven, Unpredictably shaped tips
- Overlapping of material of the tips
- Reduced likelihood of optimal apical seal

ML.029

MILLIMETER MARKED + LASER INSPECTED GUTTA PERCHA POINTS



ML.029

M - Millimeter Marked
L - Laser Inspected
.029 - Diameter Tolerance

Available Sizes

Size	P-63
XF	ML 102-601
FF	ML 102-602
MF	ML 102-603
F	ML 102-604
FM	ML 102-605
M	ML 102-606
ML	ML 102-607
L	ML 102-608
XL	ML 102-609
XF/M	ML 102-691

(Pkg. of 100)

Size vs Color Chart

15	45	90	XF	ML
20	50	100	FF	L
25	55	110	MF	XL
30	60	120	F	08
35	70	130	FM	10
40	80	140	M	

Package Information

• P-43 Vial Package

Contains 6 light weight plastic square vials
with color coded caps

Box dimension :

77 x 17 x 50mm(W x H x D)

• P-63 Spill Proof Package

6 compartments with outer paper box

Box dimension:

73 x 17 x 49mm(W x H x D)

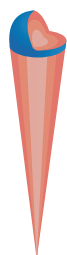
Size	P-43	P-63
#8		ML 101-601
#10		ML 101-602
#15	ML 101-403	ML 101-603
#20	ML 101-404	ML 101-604
#25	ML 101-405	ML 101-605
#30	ML 101-406	ML 101-606
#35	ML 101-407	ML 101-607
#40	ML 101-408	ML 101-608
#45	ML 101-409	ML 101-609
#50	ML 101-410	ML 101-610
#55	ML 101-411	ML 101-611
#60	ML 101-412	ML 101-612
#70	ML 101-413	ML 101-613
#80	ML 101-414	ML 101-614
#15/40	ML 101-491	ML 101-691
#45/80	ML 101-492	ML 101-692
#90/140	ML 101-493	ML 101-693

(Pkg. of 120)

DIA-PROISO.04/.06 PLUS

MILLIMETER MARKED + LASER INSPECTED SPECIAL TAPER GUTTA PERCHA POINTS

- Millimeter Marked Special Taper Gutta Percha Points.
- Designed to be used to complement for Profile, Hero & K3 files
- Available in taper .04 & .06



6% Dia-ProIso .06 Plus

4% Dia-ProIso .04 Plus

2% ML.029 / MMPP



Available Sizes

Size	Dia-ProIso .04 Plus	Dia-ProIso .06 Plus
	P-63	P-63
#15	ML 158-603	ML 159-603
#20	ML 158-604	ML 159-604
#25	ML 158-605	ML 159-605
#30	ML 158-606	ML 159-606
#35	ML 158-607	ML 159-607
#40	ML 158-608	ML 159-608
#45	ML 158-609	ML 159-609
#50	ML 158-610	ML 159-610
#55	ML 158-611	ML 159-611
#60	ML 158-612	ML 159-612
#70	ML 158-613	ML 159-613
#80	ML 158-614	ML 159-614
#15/40	ML 158-691	ML 159-691
#45/80	ML 158-692	ML 159-692

(Pkg. of 60)

DIA-PROT



- Designed to be used to complement **Protaper Files**.
- Millimeter Marked Points
- One hand slide open lid

Size	ITEM No.
#F1	ML 150-S601
#F2	ML 150-S602
#F3	ML 150-S603
#F4	ML 150-S604
#F5	ML 150-S605
#F1/F3	ML 150-S691
#F4/F5	ML 150-S692
#F1/F5	ML 150-S693

(Pkg. of 60)

DIA-PROT NEXT* **NEW**



- Designed to be used to complement **Protaper Next Files**
- Millimeter Marked Points
- One hand slide open lid

Size	ITEM No.
#X2	ML167-S602
#X3	ML167-S603
#X4	ML167-S604
#X5	ML167-S605
#X2/X5	ML167-S691
#X2/X3	ML167-S692

(Pkg. of 60)

DIA-PRO R

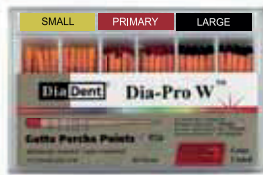


- Designed to be used to complement **RECIPROC® Files**.
- Millimeter Marked Points

Size	ITEM No.
#25	ML164-605
#40	ML164-608
#50	ML164-610
#Asst(25/40/50)	ML164-691

(Pkg. of 60)

DIA-PRO W



- Designed to be used to complement **Wave One Files**.
- Millimeter Marked Points
- One hand slide open lid

Size	ITEM No.
#Small	ML165-S601
#Primary	ML165-S602
#Large	ML165-S603
#Asst(Small/Primary/Large)	ML165-S691

(Pkg. of 60)

DIA-PRO W GOLD* **NEW**



- Designed to be used to complement **Wave One Gold Files**.
- Millimeter Marked Points
- One hand slide open lid

Size	ITEM No.
#Small	ML168-S601
#Primary	ML168-S602
#Medium	ML168-S603
#Large	ML168-S604
#Asst(Small/Primary/Medium/Large)	ML168-S691

(Pkg. of 60)

DIA-PINK



- Shorter than usual to suit slightly shorter canals
- available in 20 mm length
- Widely used in Europe
- One hand slide open lid

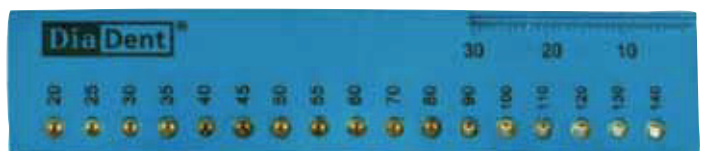
Size	ITEM No.
#XXF	103-601
#XF	103-602
#F	103-603
#M	103-604
#L	103-605
#XXF/L	103-691

(Pkg. of 100)

DIA-GP GAUGE

• ITEM #781-001

- Designed to size a perfect master cone from any Gutta Percha Points.
- Drop it into the apical size and cut off with a blade.
- Autoclavable
- Dimensions: 92 x 3 x 20m/m(W x H x D)



MMPP

MILLIMETER MARKED PAPER POINTS



- MMPP is marked to provide preliminary guidance in measuring the root canal depth before proceeding clinically with the application of the Gutta Percha Points.
- These points are highly absorbent and color coded to identify ISO tip sizes.

Available Sizes

Size	P-33	P-63
XXF	MP 202-301	MP 202-601
XF	MP 202-302	MP 202-602
F	MP 202-303	MP 202-603
M	MP 202-304	MP 202-604
C	MP 202-305	MP 202-605
XC	MP 202-306	MP 202-606
XXF/XC	MP 202-391	MP 202-691

(Pkg. of 200)

Size	P-33	P-43	P-63
#8	MP 201-301		MP 201-601
#10	MP 201-302		MP 201-602
#15	MP 201-303	MP 201-403	MP 201-603
#20	MP 201-304	MP 201-404	MP 201-604
#25	MP 201-305	MP 201-405	MP 201-605
#30	MP 201-306	MP 201-406	MP 201-606
#35	MP 201-307	MP 201-407	MP 201-607
#40	MP 201-308	MP 201-408	MP 201-608
#45	MP 201-309	MP 201-409	MP 201-609
#50	MP 201-310	MP 201-410	MP 201-610
#55	MP 201-311	MP 201-411	MP 201-611
#60	MP 201-312	MP 201-412	MP 201-612
#70	MP 201-313	MP 201-413	MP 201-613
#80	MP 201-314	MP 201-414	MP 201-614
#15/40	MP 201-391	MP 201-491	MP 201-691
#45/80	MP 201-392	MP 201-492	MP 201-692
#90/140	MP 201-393	MP 201-493	MP 201-693

Package Information

• P-33 Cell Package

Points remain sterile until opened
Box dimension: 78 × 19 × 50mm(W × H × D)

• P-43 Vial Package

Contains 6 light weight plastic square vials with color coded caps
Box dimension: 77 × 17 × 50mm(W × H × D)

• P-63 Spill Proof Package

6 compartments plastic package
Box dimension: 73 × 17 × 49mm(W × H × D)

Size vs Color Chart

8	10		
15	45	90	XXF
20	50	100	XF
25	55	110	F
30	60	120	M
35	70	130	C
40	80	140	XC

Contents

Size	P-33	P-43	P-63
#08-80	200pcs	200pcs	200pcs
#90-140	200pcs	120pcs	120pcs

DIA-PROISO .04/.06 PLUS

MILLIMETER MARKED SPECIAL TAPER PAPER POINTS

- Millimeter marked Special Taper Absorbency Paper Points.
- Designed to be used for drying and cleaning the canals prepared with **Profile, Hero & K3 files**.
- Available in .04 & .06 taper.



Available Sizes

Size	Dia-Proiso .04 Plus	Dia-Proiso .06 Plus
	P-63	P-63
#15	MP 258-603	MP 259-603
#20	MP 258-604	MP 259-604
#25	MP 258-605	MP 259-605
#30	MP 258-606	MP 259-606
#35	MP 258-607	MP 259-607
#40	MP 258-608	MP 259-608
#45	MP 258-609	MP 259-609
#50	MP 258-610	MP 259-610
#55	MP 258-611	MP 259-611
#60	MP 258-612	MP 259-612
#70	MP 258-613	MP 259-613
#80	MP 258-614	MP 259-614
#15/40	MP 258-691	MP 259-691
#45/80	MP 258-692	MP 259-692

(Pkg. of 100)

DIA-PROISO .04/.06 PLUS IN THE CELL PACKAGE



Cell pkg	Dia-Proiso .04 Plus	Dia-Proiso .06 Plus
#15	MP258-703	MP259-703
#20	MP258-704	MP259-704
#25	MP258-705	MP259-705
#30	MP258-706	MP259-706
#35	MP258-707	MP259-707
#40	MP258-708	MP259-708
#15/40	MP258-791	MP259-791

(Pkg. of 120)

- Points remain sterile until opened

DIA-PROT



- Designed to be used to complement **Protaper Files**.
- Millimeter Marked Points
- One hand slide open lid

Size	ITEM No.
#F1	MP250-S601
#F2	MP250-S602
#F3	MP250-S603
#F4	MP250-S604
#F5	MP250-S605
#F1/F3	MP250-S691
#F4/F5	MP250-S692
#F1/F5	MP250-S693

(Pkg. of 100)

DIA-PROT NEXT* **NEW**

- Designed to be used to complement **Protaper Next Files**.
- Millimeter Marked Points
- One hand slide open lid

Size	ITEM No.
#X2	MP267-S602
#X3	MP267-S603
#X4	MP267-S604
#X5	MP267-S605
#X2/X5	MP267-S691
#X2/X3	MP267-S692

(Pkg. of 100)

DIA-PRO R

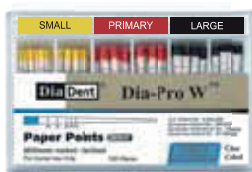


- Designed to be used to complement **RECIPROC® Files**.
- Millimeter Marked Points

Size	ITEM No.
#25	MP264-605
#40	MP264-608
#50	MP264-610
#Asst(25/40/50)	MP264-691

(Pkg. of 100)

DIA-PRO W



- Designed to be used to complement **Wave One Files**.
- Millimeter Marked Points
- One hand slide open lid

Size	ITEM No.
#Small	MP265-S601
#Primary	MP265-S602
#Large	MP265-S603
#Asst(Small/Primary/Large)	MP265-S691

(Pkg. of 100)

DIA-PRO W GOLD* **NEW**

- Designed to be used to complement **Wave One Gold Files**.
- Millimeter Marked Points
- One hand slide open lid

Size	ITEM No.
#Small	MP268-S601
#Primary	MP268-S602
#Medium	MP268-S603
#Large	MP268-S604
#Asst(Small/Primary/Medium/Large)	MP268-S691

(Pkg. of 100)

PACKAGE INFORMATION

• P-63 Spill Proof Package

6 compartments with outer paper box.
Box dimension: 73 × 17 × 49mm
(W × H × D)



• P-43 Vial Package

Contains 6 light weight plastic square vials with color coded caps
Box dimension: 77 × 17 × 50mm
(W × H × D)



• SP-60 Slide Package

One hand slide open lid
Cellophane shrink-wrapped package
Box dimension: 70 × 13 × 45 mm^e
(W × H × D)



• P-33 Cell Package

Points remain sterile until opened
Box dimension: 78 × 19 × 50mm
(W × H × D)



TEMPORARY STOPPING



- For temporary filling and thermal diagnostics tool.
- A warmed stick with pinpoint thermal sensitivity.
- High quality Gutta Percha.
- Easy to heat.
- Available in White

	White
120g	180-201

DIATEMP™

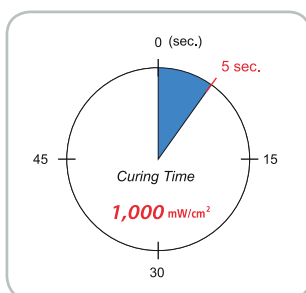
A VISIBLE, LIGHT CURED TEMPORARY FILLING MATERIAL

Light Cured material with nano-sized silver for temporary/intermediate restorations of inlay and onlay, for relining prefabricated crowns and bridges.



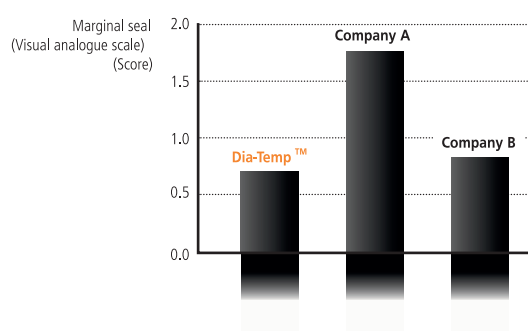
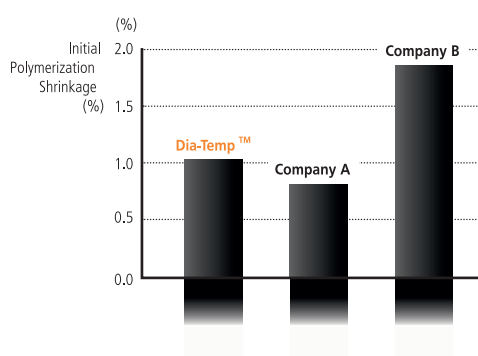
Benefits

- Quick and simple removal: Can be removed in one piece
- High wear resistance, mechanical strength
- Ensures a fast set
- Excellent adhesion
- Easy application: Convenient syringe dispensed material does not required mixing
- Blue Dia-Temp is ideal for Posterior teeth
- Yellow Dia-Temp is ideal for Anterior teeth



Packages

- 3 syringes of 3g
- ITEM #2003-1101 Blue
- ITEM #2003-1201 Yellow



E-TEMP**HYDRAULIC TEMPORARY RESTORATIVE MATERIAL**

- Temporary filling material for standard cavities and post-endodontic treatments.

**Benefits**

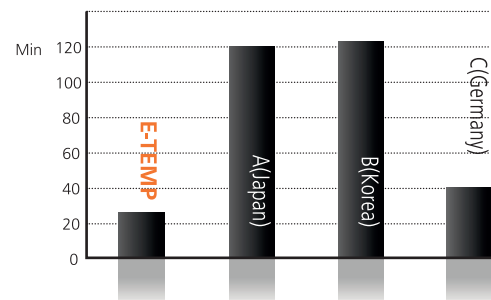
- Temporary Filling Material for Standard Cavities.
- Easily setting initiated by saliva.
- Excellent adaptability.
- Easy to remove.
- Adheres to dentine, expands slightly during the setting and hardens rapidly to ensure hermetical seal.
- Improved the mechanical properties for the quick temporary filling.

Directions

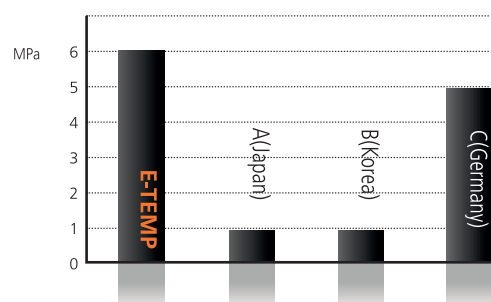
- Prepare and dry the cavity with a small cotton pellet.
- Transfer E-TEMP to the cavity using a suitable instrument and form the contour. In the case of occlusal Class I, the patient bites down on the surface, and then form the contour.
- After the patient close the mouth, E-TEMP will harden within 25 minutes. Recommend the patient to avoid the strong pressure or abrasion for at least 2 hours.

Package

- 30g ITEM #2004-1001

**Setting Time**

- This test is measured as ISO 3107 regulations after the same setting time in the laboratory(R&D DiaDent 2013)

Compressive Strength

- This test is measured as the same condition at 37 degrees and 95% humidity in the laboratory(R&D DiaDent 2013)

DiaCem™ TempNE**NON EUGENOL TEMPORARY CEMENT**

- Non-Eugenol Temporary cement for trial cementing restorations or temporary crowns and bridges

**Features**

- Easy and precise direct dosing
- No hand mixing and Stable mix of base and catalyst viscosity with the automix tip
- High bond strength to prevent leakage and sensitivity to cold and heat
- Easy removal for the patient comfort
- Low film thickness with high compressive and flexural strength
- Fast working time(3 min) and setting time(5 min in the mouth)

Packages

- **ITEM#2004-2101** 2 Syringes of 10g, 10 Automix tips
- **ITEM#2001-6112** 20 Automix tips

DIAPASTE™**CALCIUM HYDROXIDE PASTE WITH BARIUM SULFATE****Characteristics**

- Premixed Calcium Hydroxide + Barium Sulfate paste for root canal treatment.
- Temporary root filling.
- Root canal filling for primary teeth.
- Use after pulp extirpation treatment.
- Filling on the pulpotomy.
- Temporary Pulp Capping.

Benefits

- Water Soluble: Easy to clean and remove, reduce operative time
- Easy and quick access
- Radiopaque
- Antibacterial

Packages

- **ITEM #1001- 402 Regular Kit**
- 2g of paste and 10 disposable tips with cap
- **ITEM #1001- 320 Transparant Disposable Syringe Tips**
- 20 disposable tips.
(from 2019)

DIA-PROSEAL™**ROOT CANAL SEALING MATERIAL**

- DIA-PROSEAL™, root canal sealer is an epoxy resin-based formula with outstanding flow characteristics.

Benefits

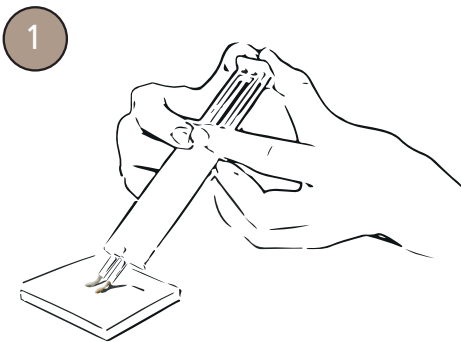
- The ideal root sealer with Low Shrinkage reduced gapping between the sealer and canal wall.
- Low solubility makes it resistant to breaking down over time.
- 1:1 paste to paste manual mixing system.
- Fast and Easy Preparation and Less Waste.
- Mixing and handling is very smooth.
- Excellent flow properties allow it to reach and seal lateral canals, making it especially suited to warm gutta-percha methods.
- Low risk of cytotoxicity with short setting time.
- Better biocompatibility for a solution to the sensitivity and periapical inflammation.
- High radiopacity
- Lightly coated Gutta Percha Points with a good film thickness.

Directions

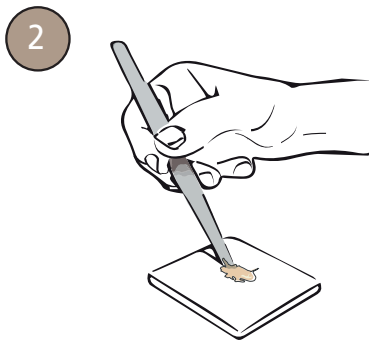
- Prior to application of DIA-PROSEAL™, prepare and shape the root canal using endodontic technique.
- Remove all of debris in the root canal. And disinfect and clean the root canal with Sodium Hypochlorite or EDTA solution and dry it.
- Using DIA-PROSEAL™ in dual syringes, press the syringe and squeeze equal volume units of Base material (yellow) and Catalyst material (white) in the ratio of 1:1 on a mixing pad.
- Mix the Base material (yellow) and Catalyst material (white) with a spatula for 10~20 sec to be mixed into a ivory color completely.
- Apply only a light coating of DIA-PROSEAL™ to Gutta Percha Points (silver or titanium root canal points also) and put points into the apex slowly.
- Please check the seal by X-Ray.

Package

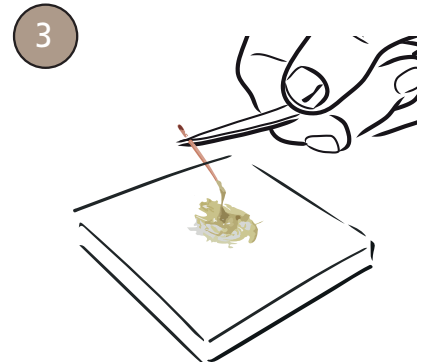
- **ITEM#1003-201**
 - 1 Syringe of 16g (Base 6.5g + Catalyst 9.5g)
 - 1 Mixing pad
 - 1 Spatula

DIA-PROSEAL™**ROOT CANAL SEALING MATERIAL****INSTRUCTIONS**

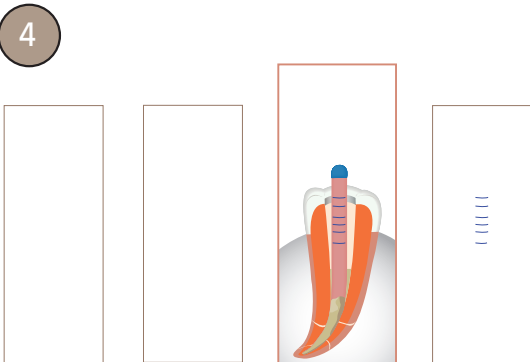
- Press the syringe with two hands to apply Base and Catalyst in 1:1 on the mixing pad



- Mix Base and Catalyst for 10~20 sec with the spatula as 1:1 paste to paste manual mixing system



- Coat Gutta Percha Points in the mixed DIA-PROSEAL



- Put Gutta Percha Points into the root canal

RADIOGRAPHS

- High radiopacity with DIA-PROSEAL™

DIA-DUO**CORDLESS WARM VERTICAL COMPACTION &
BACKFILL OBTURATION DEVICE****NEW**

Dia-Duo is new developed Cordless Obturation System included Duo-Pen warm vertical compaction device and Duo-Gun backfill obturation device. Duo-Pen offers excellent warm vertical compaction with quick heating tip. Duo-Gun with quick heating system allows the fast and perfect obturation delivery. Duo-Gun and Duo-Pen are located in one charger.

Packages

- **ITEM #4007-2000 Regular Kit**

- Duo-Gun Handpiece, Duo-Pen Handpiece & Duo-Charger
- Accessories: Heating Condenser #.04-50, Heating Condenser #.06-50, Duo-Pen Battery, Disposable Sheaths (200ea/Box) GP Obturation Tip(23G, 4ea), Gutta Percha Obturator (100ea), Duo-Gun Battery, Safety Cap(2ea), Plunger set, Plunger O-Ring Assembly(2ea), Multi Tool, Scrubbing Brush, Power Adapter, AC Power Cord

Accessories

- **ITEM #4007-2010 Duo-Gun Handpiece**
- **ITEM #4007-2020 Duo-Pen Handpiece**
- **ITEM #4007-2030 Duo Charger**
- **ITEM #4007-2080 Duo-Gun Battery**
- **ITEM #4007-2090 Duo-Pen Battery**

* Go to Page 16 & 17 to find all of Accessories.



DUO-PEN**CORDLESS WARM VERTICAL COMPACTION DEVICE****NEW**

Duo-Pen is Cordless Warm Vertical Compaction Device and also Duo-Pen has the optimum functionality and quality and is full proven effective for the downpack obturation system.

Techniques

- **Softening** the root canal filling material (Gutta Percha Points) during root canal treatment
- **Spreading** the root canal filling material (Gutta Percha Points) laterally and vertically
- **Cutting** the root canal filling material (Gutta Percha Points)
- **Compacting** the root canal filling material (Gutta Percha Points) using heat

Features

- Excellent result with warm and vertical compaction for all canals including lateral canals. Duo-Pen offers reliable results with tightly sealed root canals
- Cordless, ergonomic and lightweight design
- Quick heating tip reaches high level of temperature within one (1) second to save treatment time
- Display in the handpiece shows the remaining battery power, error and setting temperature
- The effective temperature control prevents the pen tip from burning out
- Duo-Pen handpiece automatically recognizes the size of tip
- Color-coded heating condensers are available in various sizes (#.04-40, .04-45, .04-50, .06-50, .08-55) for easy identification
- Three temperature settings (170°C, 200°C, 230°C)

Packages

- **ITEM #4007-2002 Regular Kit**
 - Duo-Pen Handpiece & Charger
 - Accessories: Heating Condenser #.04-50, Heating Condenser #.06-50, Disposable Sheaths (200ea/Box), Power Adapter, AC Power Cord

Accessories

- **ITEM #4007-2020 Handpiece**
- **ITEM #4007-2032 Charger**
- **ITEM #4007-2070 Heating Condenser(.04-40) 1ea**
- **ITEM #4007-2071 Heating Condenser(.04-45) 1ea**
- **ITEM #4007-2072 Heating Condenser(.04-50) 1ea**
- **ITEM #4007-2073 Heating Condenser(.06-50) 1ea**
- **ITEM #4007-2074 Heating Condenser(.08-55) 1ea**
- **ITEM #4007-2075 Heating Condenser(.04-50/.06-50), 1ea each**
- **ITEM #4007-2090 Battery**
- **ITEM #4007-2270 Disposable Sheath(200ea/box)**
- **ITEM #4007-2280 Power Adapter**
- **ITEM #4007-2287 AC Power Cord**

Heating Condenser

DUO-GUN**CORDLESS BACKFILL OBTURATION DEVICE****NEW**

Duo-Gun is Cordless Obturation System Device, Duo-Gun offers fast and easy obturation delivery. With this effective obturation system and technique, optimum results are achieved.

Features

- Cordless and Compact design allows complete freedom of movement
- Reliable Gutta Percha filling to the desired level without delay
- Variable Temperature settings (140°C, 170°C, 200°C): precise control of obturation flow
- Quick heating system: Temperature reaches 200°C within 15 seconds
- Fast and continuous flow of filling tightly seals the canal
- Left-handed person can push on/off button easily, both sides of handpiece have the power button
- Both displays of Handpiece show the remaining battery power, error and setting temperature
- The ergonomic design enables the obturation with a minimum input of force
- Durable heater is installed to minimize minor troubles
- Maintain the stable temperature during the operation with the accurate temperature control system

Packages

- **ITEM #4007-2001 Regular Kit**
 - Duo-Gun Handpiece & Charger
 - Accessories: GP Obturation Tips (23G, 4ea), Plunger Set, Multi Tool (1ea) Safety Caps (2ea), Gutta Percha Obturator (100ea), Plunger O-ring Assembly (2ea), Scrubbing Brush, Battery, Power Adapter, AC Power Cord

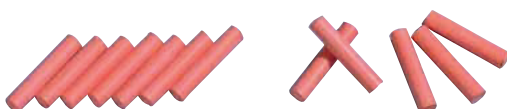
Accessories

- ITEM #4007-2010 Handpiece
- ITEM #4007-2031 Charger
- ITEM #4007-2080 Battery
- ITEM #4007-2120 GP Obturation Tip(23G, 4ea)
- ITEM #4007-2121 GP Obturation Tip(25G, 4ea)
- ITEM #4007-2130 Safety Cap (2ea)
- ITEM #4007-2140 Plunger Set
- ITEM #4007-2150 Plunger O-Ring Assembly (2ea)
- ITEM #4007-2160 Multi Tool (1ea)
- ITEM #4007-2161 Scrubbing Brush (1ea)
- ITEM #4007-2280 Power Adapter
- ITEM #4007-2287 AC Power Cord
- ITEM #181-101 Gutta Percha Obturator(Medium type, 100ea)

**GUTTA PERCHA OBTURATOR**

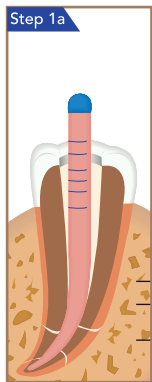
- **ITEM #181-101 Medium type**

- Designed to use with Duo-Gun.
- Specially formulated Gutta Percha with excellent flowing characteristics.
- Easy to heat
- Pkg. of 100

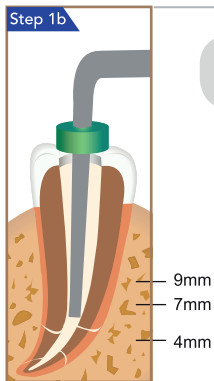


ROOT CANAL OBTURATION TECHNICAL SEQUENCE

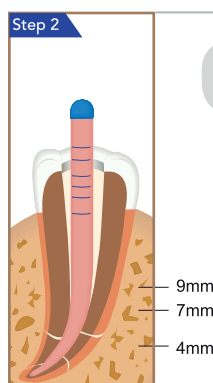
DOWNPACK OBTURATING WITH DUO-PEN



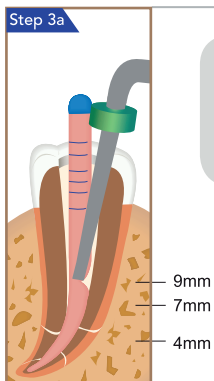
Shape the root canal with Endo Files and check the working length. Select the master Gutta Percha cone to be filled in the canal.



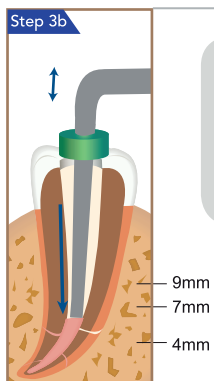
Insert pen tip into the root canal to the point 4~7mm short of the working length and fit Endo Stop in the pen tip.



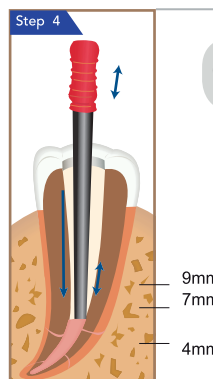
Fill the master Gutta Percha cone that is dipped in a sealer.



Place pen tip in the orifice of the canal and activate the device by pressing the Operation Button, using the activated pen tip, cut the middle of Gutta Percha cone and downpack it to the point 6~9mm from the APEX about 1.5~2 seconds only.



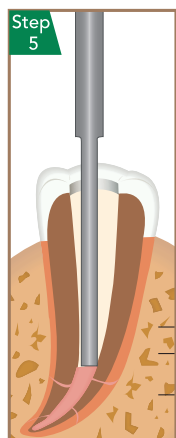
Release the Operation Button to allow pen tip to begin cooling, while at the same time continue pushing and holding the cooled pen tip to the APEX for 8 seconds to fill the canal completely. Activate the pen tip again by pressing and holding the Operation Button for about 1~1.5 seconds, compact the Gutta Percha cone to the point 4~7mm of working length.



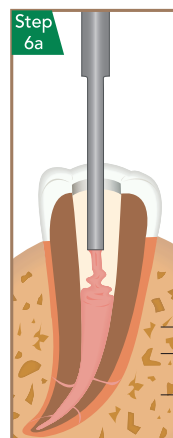
Condense the remaining material using with hand plugger.

ROOT CANAL OBTURATION TECHNICAL SEQUENCE

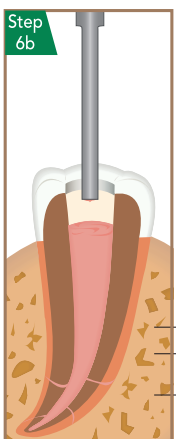
BACKFILL OBTURATING WITH DUO-GUN



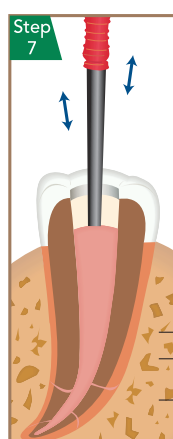
Using Duo-Gun's tip, make contact with the upper part of filled master cone in the canal, transfer heat for 3 to 5 seconds.



Flow the melted Gutta Percha Obturator to the root canal.

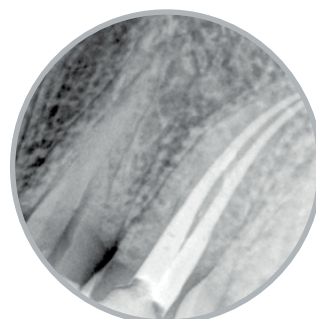
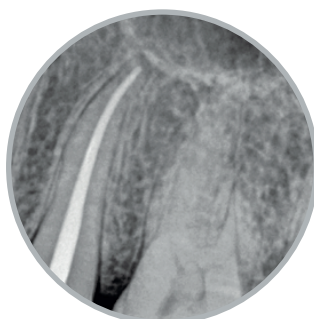


Continue flowing while withdrawing the needle from the canal.



Use a hand plugger to compact obturation material.

Radiographs



Perfect and tightly sealed root canals after the root canal warm obturation technique with Duo-Gun & Duo-Pen.